

Box Hill High School (7635)

2008 School Level Report

Please check the data in this report. If, after comparing it with your own records, you deem it to be incorrect or incomplete, follow the directions on the following website:

- <http://www.education.vic.gov.au/management/schoolimprovement/performance/performancedata/>
then select 'School Performance Reports'.

Contents

	Page No.
Privacy	3
SFO Density and LBOTE	4
Teacher Judgments against the VELs	5-13
NAPLAN - Reading	14
- Writing	15
- Numeracy	16
AIM - Reading	17
- Mathematics	18
VCE	19-23
VET	24
VCAL	25
Teacher Assessment of Student Progress (PSD students)	26-27
Enrolment	28
Student Retention - Apparent	29
- Real	30
Exit Destination	31-34
Student Absence	35
Opinion Surveys - Parent	36
- Staff	37
Performance & Development Culture	38
Staff Sick Leave	39
Teaching Staff Retention	40
Bank Balances	41

Privacy

When reporting on the school's performance to the school community, care must be taken to avoid the disclosure of information that can directly or indirectly identify an individual. This may be a particular issue when reporting on the achievement of specific cohorts of students or the opinions of staff where there are small numbers.

In situations where privacy cannot be assured, schools may wish to report on the mean result or provide a written comment on school, year level or cohort performance.

Where the School Level Report is provided to school council members as part of any annual reporting process, or used for discussion on a school's performance, such as in consultation with the school community in the school self-evaluation process, it is important to remind school community members of their duty to only use this information for the purpose it was provided, and that the material must be kept confidential.

It is important to note that information that identifies an individual or can be used with other readily available information to identify a person is now protected by the *Information Privacy Act 2000* (<http://www.education.vic.gov.au/about/deptpolicies/informationprivacy.htm>).

SFO Density and LBOTE

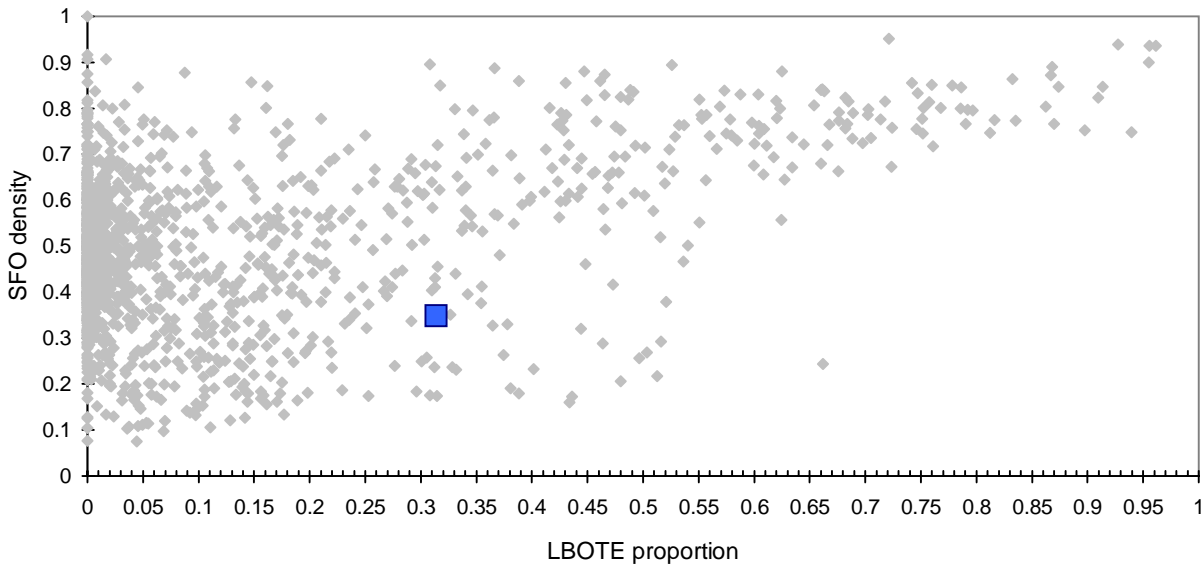
School no: 7635

School name: Box Hill High School

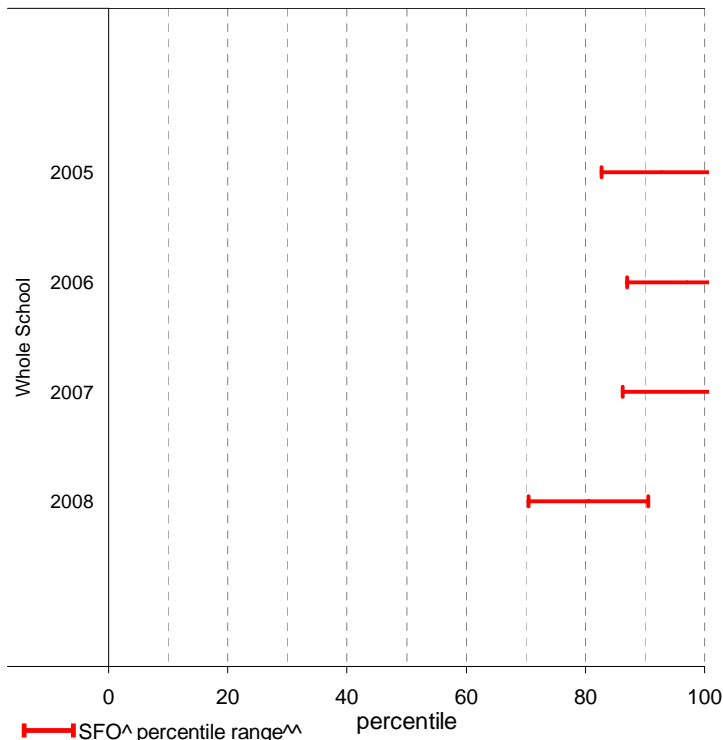
Explanation: The chart below plots the school's 2008 SFO (Student Family Occupation) density[^] and LBOTE (Language Background Other Than English) proportion* against that of all government schools. This school is highlighted as a square on the chart.

	2001	2002	2003	2004	2005	2006	2007	2008
SFO density [^] :					0.25	0.15	0.18	0.35
LBOTE proportion*:	0.29	0.26	0.26	0.23	0.24	0.24	0.23	0.31

School's 2008 SFO density and LBOTE proportion against that of all government schools



School's SFO[^] percentile range^{^^} over time



Notes: [^] The higher the SFO density, the lower the SFO percentile and the lower the socio-economic status (SES).

^{^^} The school's SFO percentile range shows the 20% of schools with an SFO Density most like this school.

* From 2007, a student is LBOTE if either the student or one parent/guardian speaks a language other than English at home. Prior to 2007, a student is LBOTE if the student or one of the parents was born in a non-English speaking country.

Teacher Judgments against the VELS - Year levels 7-10 combined

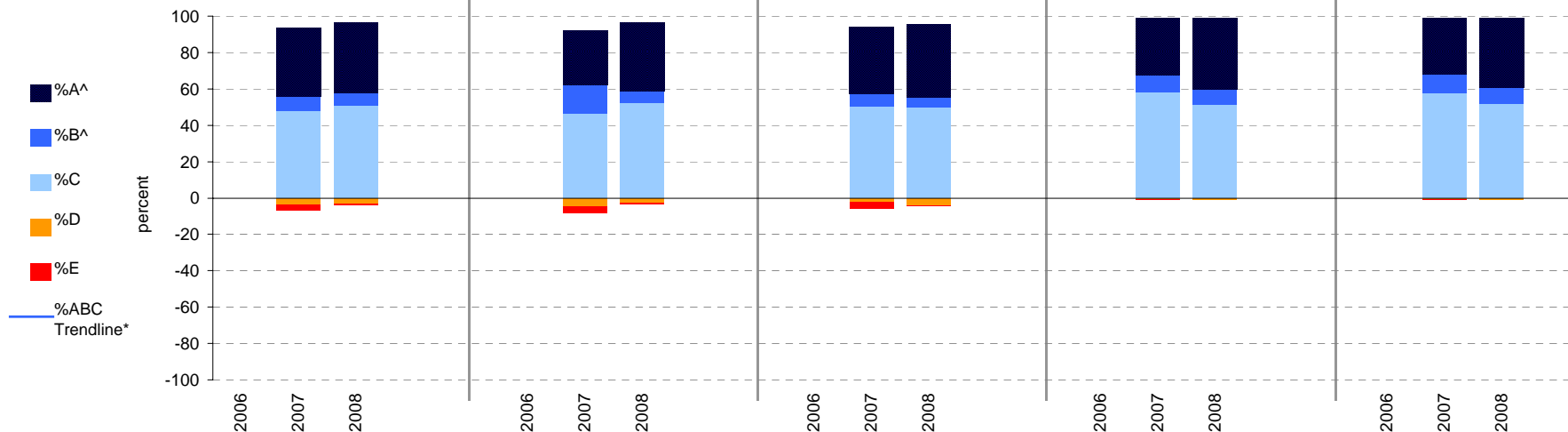
School no: 7635

School name: Box Hill High School

Source of data: Data retrieved electronically from CASES21.

Explanation: Teacher judgments of student achievement against the VELS.

Year Levels:	Reading						Writing					Speaking & Listening					Measurement, Chance & Data					Structure									
	total students	% A^	% B^	% C	% D	% E	total students	% A^	% B^	% C	% D	% E	total students	% A^	% B^	% C	% D	% E	total students	% A^	% B^	% C	% D	% E	total students	% A^	% B^	% C	% D	% E	
7-10 (combined)	2006						2006						2006						2006						2006						
	2007	527	37	8	48	4	3	527	29	16	47	5	3	523	37	7	50	2	4	499	32	10	58	1	0	499	31	10	58	0	0
	2008	497	38	7	51	3	1	497	38	6	52	3	1	496	40	6	50	4	0	505	39	9	51	1	0	505	39	9	52	1	0



Notes: * The school trendline is being trialled. It is only plotted when there is data for each calendar year.
 ^ The cutoff between grades A and B changed in 2007. Further information is available on the following website:
<http://www.education.vic.gov.au/studentlearning/studentreports/schools/whatsnew.htm>.

Teacher Judgments against the VELS - English (secondary)

School no: 7635

School name: Box Hill High School

Source of data: Data retrieved electronically from CASES21.

Explanation: Teacher judgments of student achievement against the VELS.

Notes: * The school trendline is only plotted when there is data for each calendar year.

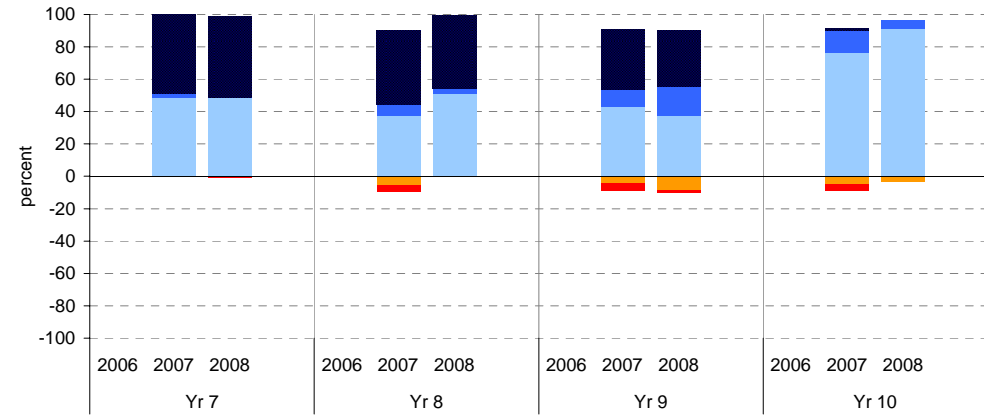
** In 2006, approx. 850 schools assessed their students against the 0.25 VELS scale. 2006 benchmarks are therefore based on a subset of schools.

^ The cutoff between grades A and B changed in 2007. Further information is available on the following website: <http://www.education.vic.gov.au/studentlearning/studentreports/schools/whatsnew.htm>.

^^ 2008 benchmarks and percentiles will be calculated in August, when data from all schools has been submitted.

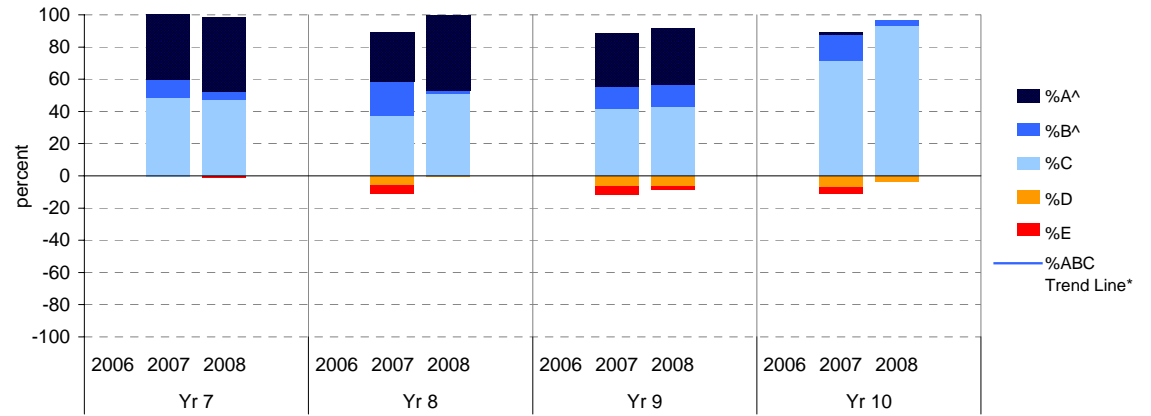
Reading

	total students	% of students by grade					Mean Score		total students		total students	% of students by grade					Mean Score	
		A^	B^	C	D	E	School	State**				A^	B^	C	D	E	School	State**
Yr 7	2006						4.32	4.32	2006						5.26	5.26		
	2007	147	49	3	48	0	4.75	4.39	2007	154	37	11	43	5	5	5.63	5.36	
	2008	153	50	1	48	1	4.75		2008	139	35	18	37	9	1	5.64		
Yr 8	2006						4.78		2006						5.77			
	2007	145	46	7	37	6	5.16	4.85	2007	81	1	14	77	5	4	5.97	5.85	
	2008	149	45	3	51	1	5.23		2008	56	0	5	91	4	0	5.92		



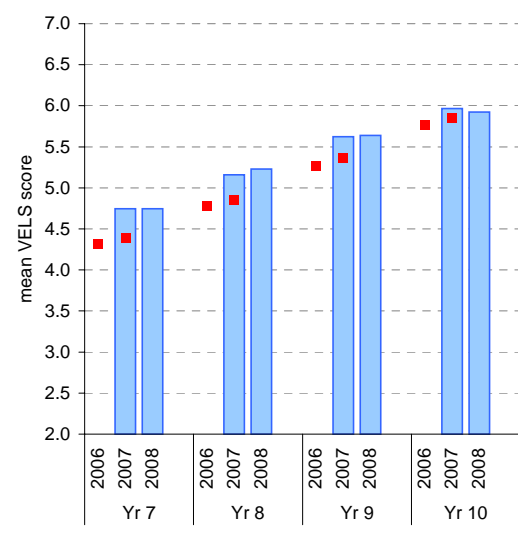
Writing

	total students	% of students by grade					Mean Score		total students		total students	% of students by grade					Mean Score	
		A^	B^	C	D	E	School	State**				A^	B^	C	D	E	School	State**
Yr 7	2006						4.28	4.28	2006						5.25	5.25		
	2007	147	40	12	48	0	4.72	4.36	2007	154	33	14	42	6	5	5.58	5.34	
	2008	153	46	5	47	1	4.74		2008	139	35	14	43	6	2	5.65		
Yr 8	2006						4.75		2006						5.75			
	2007	145	30	21	37	6	5.11	4.83	2007	81	1	16	72	7	4	5.92	5.83	
	2008	149	46	2	51	1	5.22		2008	56	0	4	93	4	0	5.92		

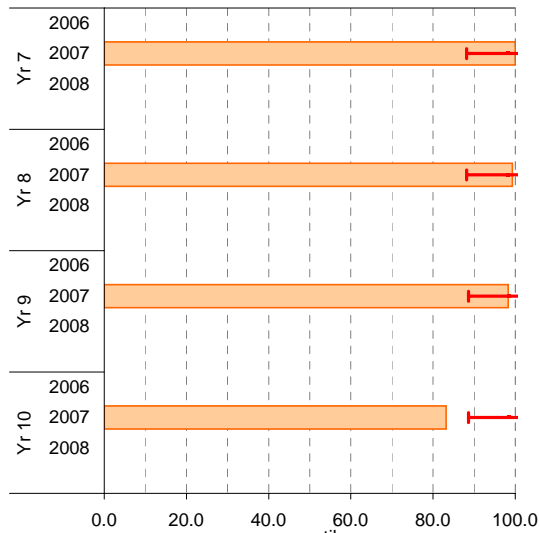


Reading

School Mean against State Mean^^



School Mean as percentile against SFO percentile range^^

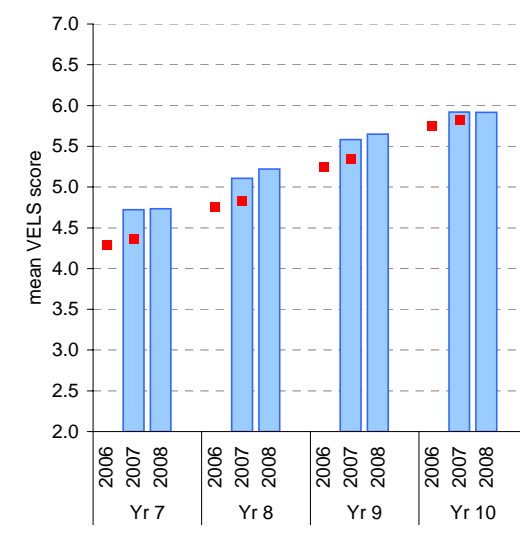


Legend: School Mean (blue bar), State Mean** (red square)

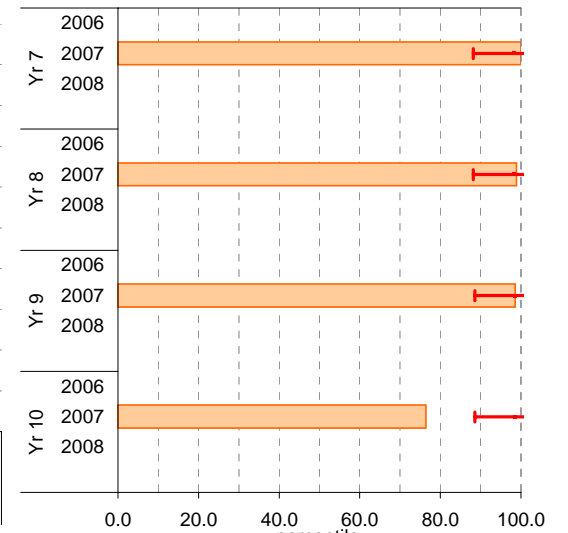
Legend: School Mean as percentile (orange bar), SFO Percentile range (red bracket)

Writing

School Mean against State Mean^^



School Mean as percentile against SFO percentile range^^



Legend: School Mean (blue bar), State Mean** (red square)

Legend: School Mean as percentile (orange bar), SFO Percentile range (red bracket)

Teacher Judgments against the VELS - English (secondary)

School no: 7635

School name: Box Hill High School

Source of data: Data retrieved electronically from CASES21.

Explanation: Teacher judgments of student achievement against the VELS.

Notes: * The school trendline is only plotted when there is data for each calendar year.

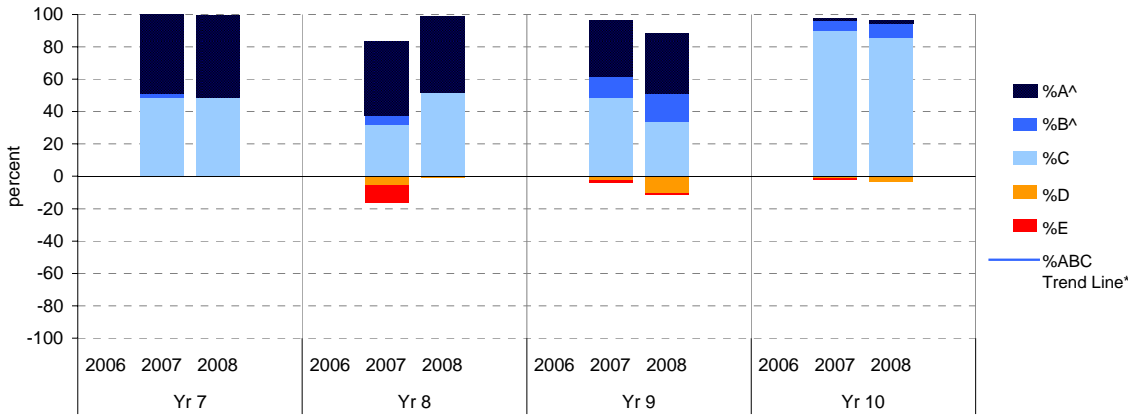
** In 2006, approx. 850 schools assessed their students against the 0.25 VELS scale. 2006 benchmarks are therefore based on a subset of schools.

^ The cutoff between grades A and B changed in 2007. Further information is available on the following website: <http://www.education.vic.gov.au/studentlearning/studentreports/schools/whatsnew.htm>.

^^ 2008 benchmarks and percentiles will be calculated in August, when data from all schools has been submitted.

Speaking and Listening

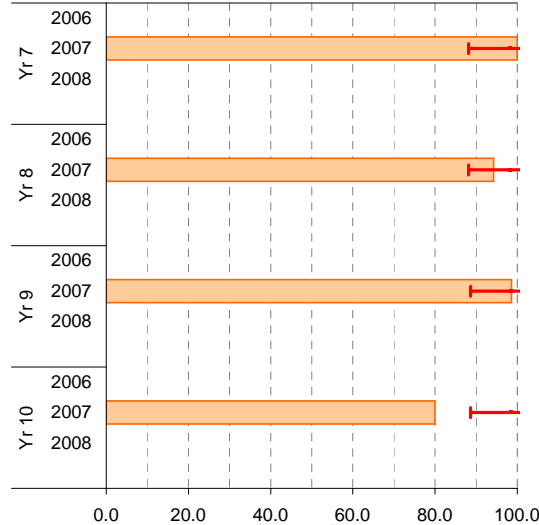
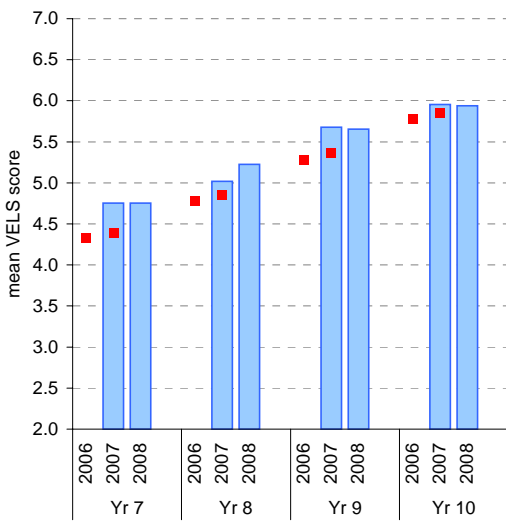
	total students	% of students by grade					Mean Score		total students	% of students by grade	Mean Score						
		A^	B^	C	D	E	School	State**			A^	B^	C	D	E	School	State**
Yr 7	2006						4.33	4.33	2006						5.28		
	2007	147	49	3	48	0	4.75	4.39	2007	151	34	13	48	3	1	5.68	5.36
	2008	153	50	0	49	1	4.75		2008	139	37	17	34	11	1	5.65	
Yr 8	2006						4.79		2006							5.78	
	2007	145	46	6	32	6	5.02	4.85	2007	80	1	6	90	1	1	5.96	5.85
	2008	148	47	0	52	1	5.23		2008	56	2	9	86	4	0	5.94	



Speaking and Listening

School Mean against State Mean^^

School Mean as percentile against SFO percentile range^^



■ School Mean
■ State Mean**

■ School Mean as percentile
— SFO Percentile range

Teacher Judgments against the VELS - Mathematics (secondary)

School no: 7635

School name: Box Hill High School

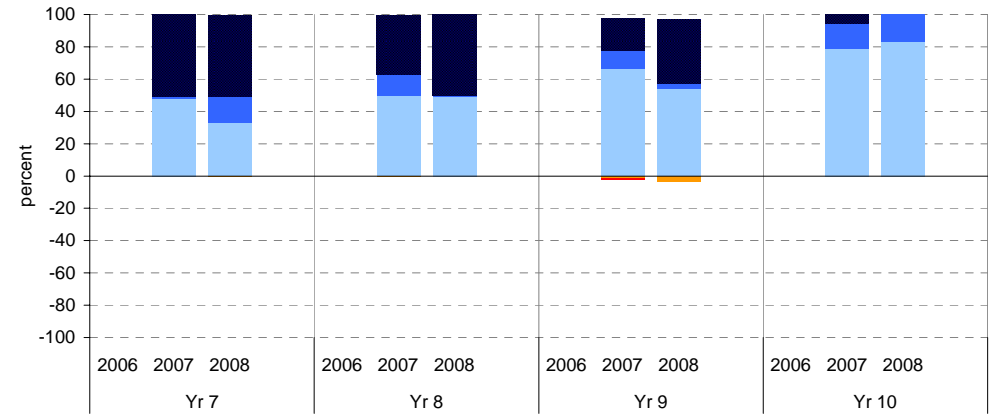
Source of data: Data retrieved electronically from CASES21.

Explanation: Teacher judgments of student achievement against the VELS.

Notes: * The school trendline is only plotted when there is data for each calendar year.
 ** In 2006, approx. 850 schools assessed their students against the 0.25 VELS scale. 2006 benchmarks are therefore based on a subset of schools.
 ^ The cutoff between grades A and B changed in 2007. Further information is available on the following website: <http://www.education.vic.gov.au/studentlearning/studentreports/schools/whatsnew.htm>.
 ^^ 2008 benchmarks and percentiles will be calculated in August, when data from all schools has been submitted.

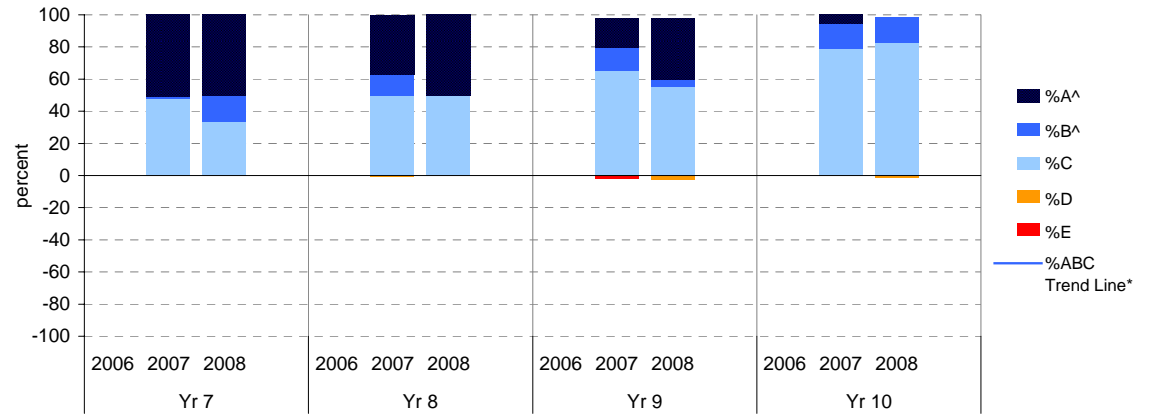
Measurement, Chance and Data

	total students	% of students by grade					Mean Score		total students	total students	% of students by grade					Mean Score	
		A^	B^	C	D	E	School	State**			A^	B^	C	D	E	School	State**
Yr 7	2006						4.31	4.31	2006	2006						5.24	5.24
	2007	147	51	1	48	0	4.76	4.40	2007	131	20	11	66	2	1	5.57	5.34
	2008	152	50	16	33	1	4.79		2008	116	40	3	54	3	0	5.68	
Yr 8	2006						4.78		2006	2006						5.66	
	2007	145	37	13	50	1	5.19	4.83	2007	76	5	16	79	0	0	6.05	5.76
	2008	150	50	1	49	0	5.25		2008	87	0	17	83	0	0	5.97	



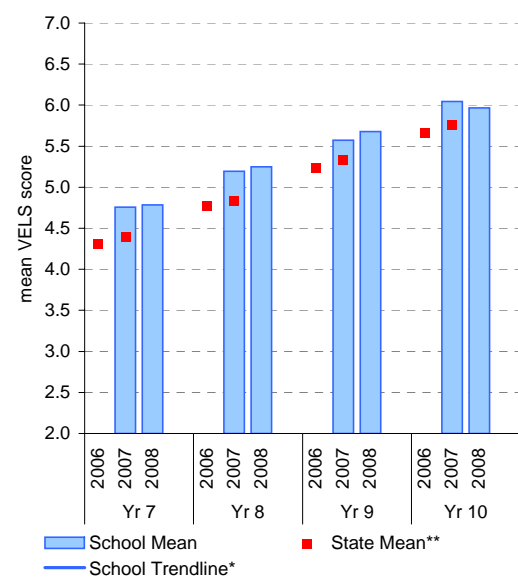
Structure

	total students	% of students by grade					Mean Score		total students	total students	% of students by grade					Mean Score	
		A^	B^	C	D	E	School	State**			A^	B^	C	D	E	School	State**
Yr 7	2006						4.30	4.30	2006	2006						5.21	5.21
	2007	147	51	1	48	0	4.76	4.39	2007	131	18	15	65	1	2	5.59	5.29
	2008	152	50	16	34	0	4.79		2008	116	38	4	55	3	0	5.67	
Yr 8	2006						4.74		2006	2006						5.60	
	2007	145	37	13	50	1	5.19	4.82	2007	76	5	16	79	0	0	6.04	5.72
	2008	150	50	1	49	0	5.25		2008	87	0	16	83	1	0	5.91	

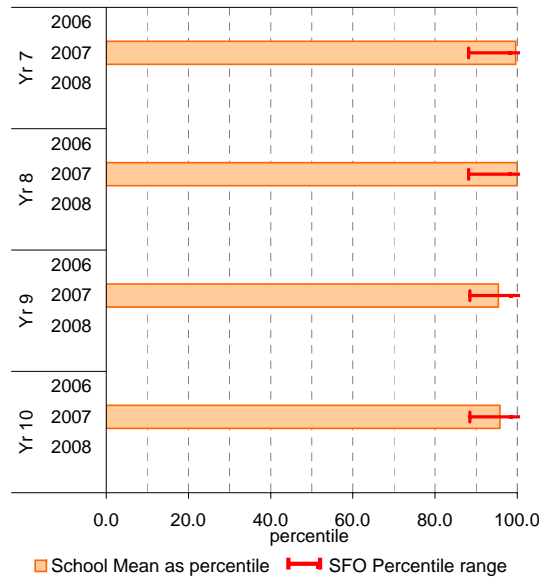


Measurement, Chance and Data

School Mean against State Mean^^

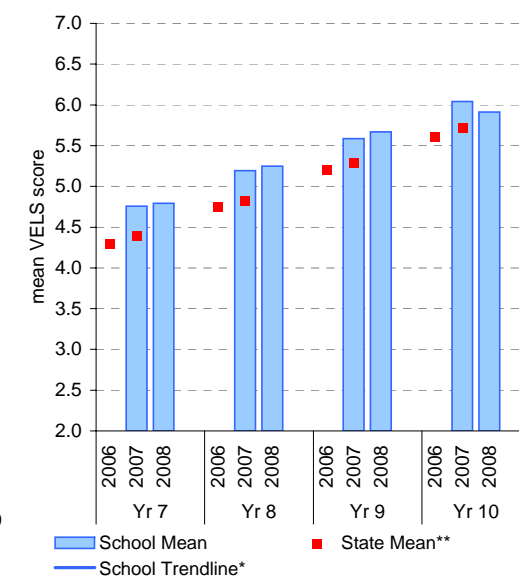


School Mean as percentile against SFO percentile range^^

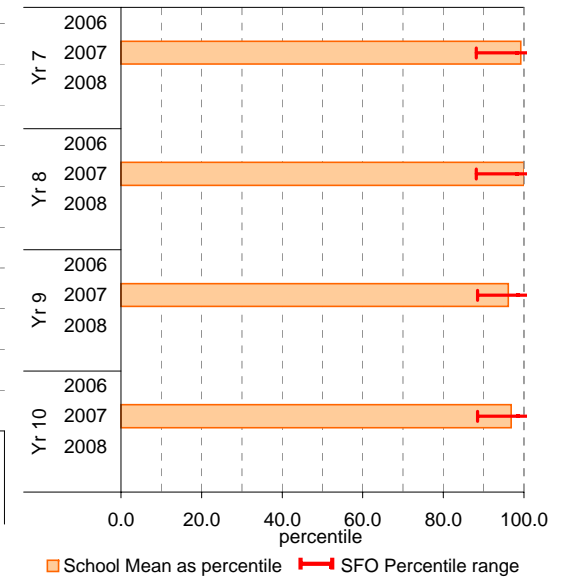


Structure

School Mean against State Mean^^



School Mean as percentile against SFO percentile range^^



Teacher Judgments against the VELS - English (secondary)

School no: 7635
School name: Box Hill High School
Source of data: Data retrieved electronically from CASES21.
Explanation: Teacher judgments of student achievement against the VELS.

Reading

Year Level	Year	Total ¹	Assessed ²	Level 1			Level 2			Level 3			Level 4			Level 5			Level 6			Level 6E			School mean	State mean [^]	Difference between school and state mean [^]				
				0.00	0.50	1.00	1.25	1.50	1.75	2.00	2.25	2.50	2.75	3.00	3.25	3.50	3.75	4.00	4.25	4.50	4.75	5.00	5.25	5.50				5.75	6.00	6.25	6.50
yr7	2008	153	153								1			1			74	1	70	6								4.75			
yr7	2007	147	147														3	68	4	72								4.75	4.39	0.36	
yr8	2008	150	149													1		16	60		5	51	16					5.23			
yr7	2006																												4.32		
yr8	2007	145	145								1			1		4			3	51	10	67						5.16	4.85	0.31	
yr9	2008	142	139												1				7	5	6	46	25	45	3			5.64			
yr7	2005																														
yr8	2006																												4.78		
yr9	2007	154	154														1	6	2	5	14	52	17	53	3	1		5.63	5.36	0.26	
yr10	2008	59	56																			2	16	35	3			5.92			
yr8	2005																														
yr9	2006																												5.26		
yr10	2007	81	81																	3		4	4	58	11	1		5.97	5.85	0.12	
yr9	2005																														
yr10	2006																												5.77		
yr10	2005																														

shading indicates a 'C' grade (at the expected standard) on the VELS scale.

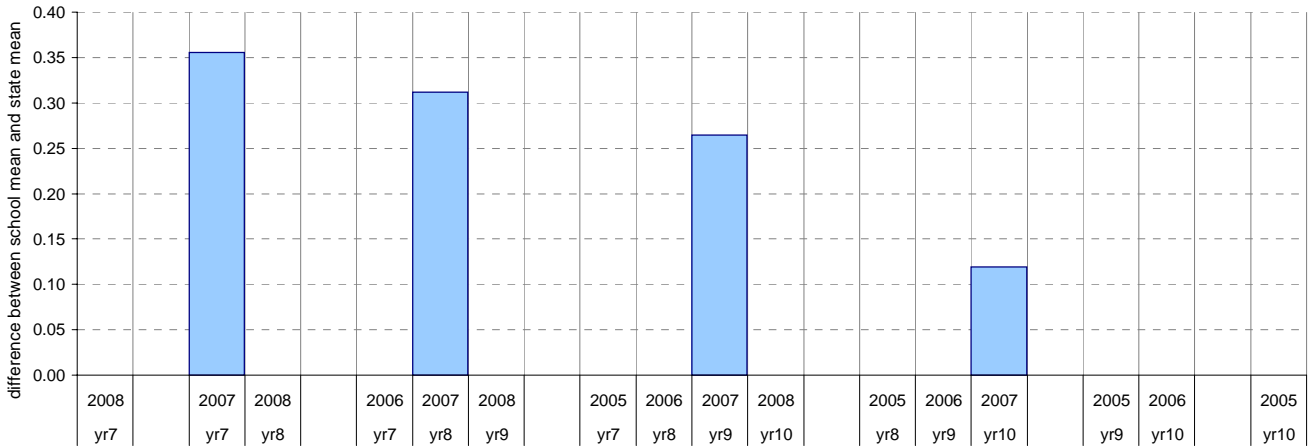
¹ The total number of students eligible to be assessed. This figure will typically match, or be very close to, the Year Level enrolment.

² The number of students assessed against the VELS. The difference between this figure and the total (1) should be accounted for by students assessed against Individual Learning Plans and/or the ESL companion in the case of English.

* In 2006, approx. 850 schools assessed their students against the 0.25 VELS scale. 2006 benchmarks are therefore based on a subset of schools.

^ 2008 benchmarks will be calculated in August, when data from all schools has been submitted.

Difference between school mean and state mean[^], by cohort group



Teacher Judgments against the VELS - English (secondary)

School no: 7635
School name: Box Hill High School
Source of data: Data retrieved electronically from CASES21.
Explanation: Teacher judgments of student achievement against the VELS.

Writing

Year Level	Year	Total ¹	Assessed ²	Level 1			Level 2			Level 3			Level 4			Level 5			Level 6			Level 6E			School mean	State mean ³	Difference between school and state mean ⁴				
				0.00	0.50	1.00	1.25	1.50	1.75	2.00	2.25	2.50	2.75	3.00	3.25	3.50	3.75	4.00	4.25	4.50	4.75	5.00	5.25	5.50				5.75	6.00	6.25	6.50
yr7	2008	153	153								1			1	3	69	8	65	6										4.74		
yr7	2007	147	147												5	66	17	59											4.72	4.36	0.36
yr8	2008	150	149												1		18	58	3	58	11								5.22		
yr7	2006																														4.28
yr8	2007	145	145								1			6	7	2		54	31	43	1							5.11	4.83	0.28	
yr9	2008	142	139												1	2	3	6	10	50	19	39	7	2					5.65		
yr7	2005																														4.75
yr8	2006																														4.75
yr9	2007	154	154								1			1	6	3	7		13	51	21	47	4						5.58	5.34	0.25
yr10	2008	59	56																	2	17	35	2						5.92		
yr8	2005																														5.25
yr9	2006																														5.25
yr10	2007	81	81																3	1	5	16	42	13	1				5.92	5.83	0.09
yr9	2005																														5.75
yr10	2006																														5.75
yr10	2005																														5.75

shading indicates a 'C' grade (at the expected standard) on the VELS scale.

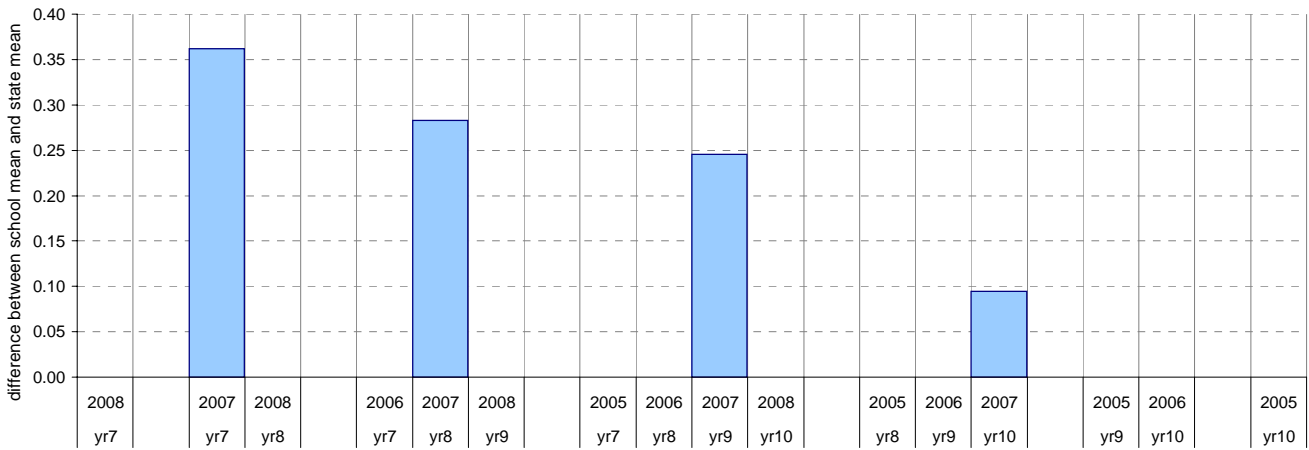
¹ The total number of students eligible to be assessed. This figure will typically match, or be very close to, the Year Level enrolment.

² The number of students assessed against the VELS. The difference between this figure and the total (1) should be accounted for by students assessed against Individual Learning Plans and/or the ESL companion in the case of English.

* In 2006, approx. 850 schools assessed their students against the 0.25 VELS scale. 2006 benchmarks are therefore based on a subset of schools.

^ 2008 benchmarks will be calculated in August, when data from all schools has been submitted.

Difference between school mean and state mean⁴, by cohort group



Teacher Judgments against the VELS - English (secondary)

School no: 7635
School name: Box Hill High School
Source of data: Data retrieved electronically from CASES21.
Explanation: Teacher judgments of student achievement against the VELS.

Speaking and Listening

Year Level	Year	Total ¹	Assessed ²	Level 1			Level 2			Level 3			Level 4			Level 5			Level 6			Level 6E			School mean	State mean ³	Difference between school and state mean ⁴		
				0.00	0.50	1.00	1.25	1.50	1.75	2.00	2.25	2.50	2.75	3.00	3.25	3.50	3.75	4.00	4.25	4.50	4.75	5.00	5.25	5.50				5.75	6.00
yr7	2008	153	153											1	3	72	72	5									4.75		
yr7	2007	147	147													71	4	72									4.75	4.39	0.36
yr8	2008	149	148												2		10	67		57	12						5.23		
yr7	2006																											4.33	
yr8	2007	145	145								7	5	1	3	5	3	1	45	8	67						5.02	4.85	0.17	
yr9	2008	142	139												1	5	10	7	40	24	48	4				5.65			
yr7	2005																												
yr8	2006																											4.79	
yr9	2007	154	151												2		4	8	65	20	46	5	1			5.68	5.36	0.31	
yr10	2008	59	56																2	17	31	5	1			5.94			
yr8	2005																												
yr9	2006																											5.28	
yr10	2007	81	80															1		1	15	57	5	1			5.96	5.85	0.11
yr9	2005																												
yr10	2006																											5.78	
yr10	2005																												

shading indicates a 'C' grade (at the expected standard) on the VELS scale.

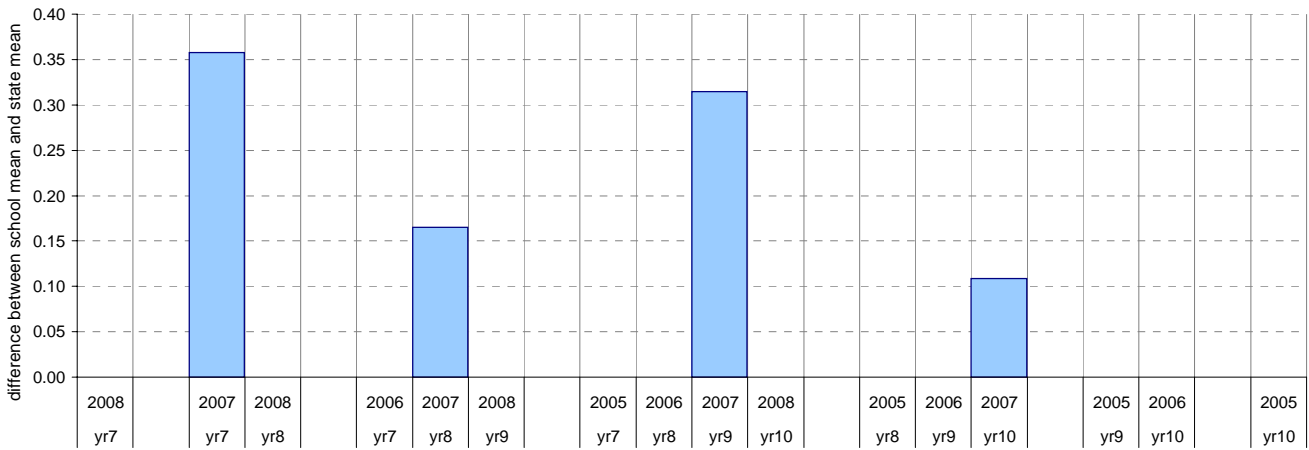
¹ The total number of students eligible to be assessed. This figure will typically match, or be very close to, the Year Level enrolment.

² The number of students assessed against the VELS. The difference between this figure and the total (1) should be accounted for by students assessed against Individual Learning Plans and/or the ESL companion in the case of English.

^{*} In 2006, approx. 850 schools assessed their students against the 0.25 VELS scale. 2006 benchmarks are therefore based on a subset of schools.

[^] 2008 benchmarks will be calculated in August, when data from all schools has been submitted.

Difference between school mean and state mean⁴, by cohort group



Teacher Judgments against the VELS - Mathematics (secondary)

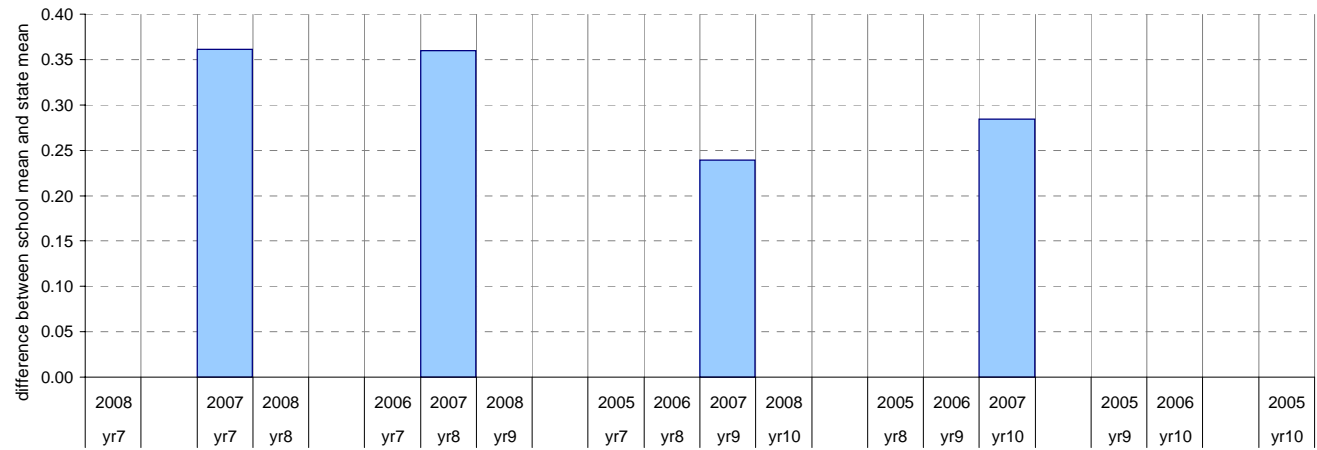
School no: 7635
School name: Box Hill High School
Source of data: Data retrieved electronically from CASES21.
Explanation: Teacher judgments of student achievement against the VELS.

Measurement, Chance and Data

Year Level	Year	Total ¹	Assessed ²	Level 1			Level 2			Level 3			Level 4			Level 5			Level 6			Level 6E			School mean	State mean ³	Difference between school and state mean ⁴						
				0.00	0.50	1.00	1.25	1.50	1.75	2.00	2.25	2.50	2.75	3.00	3.25	3.50	3.75	4.00	4.25	4.50	4.75	5.00	5.25	5.50				5.75	6.00	6.25	6.50	6.75	
yr7	2008	152	152										1				50	25	76										4.79				
yr7	2007	147	147														70	2	75										4.76	4.40	0.36		
yr8	2008	151	150														2	72		1	75								5.25				
yr7	2006																													4.31			
yr8	2007	145	145													1	9	63	19	53									5.19	4.83	0.36		
yr9	2008	118	116														4	4	59	3	46								5.68				
yr7	2005																																
yr8	2006																														4.78		
yr9	2007	131	131	1													2	4	83	15	25			1					5.57	5.34	0.24		
yr10	2008	91	87																					15					5.97				
yr8	2005																																
yr9	2006																														5.24		
yr10	2007	77	76																											6.05	5.76	0.28	
yr9	2005																																
yr10	2006																														5.66		
yr10	2005																																

shading indicates a 'C' grade (at the expected standard) on the VELS scale.
¹ The total number of students eligible to be assessed. This figure will typically match, or be very close to, the Year Level enrolment.
² The number of students assessed against the VELS. The difference between this figure and the total (1) should be accounted for by students assessed against Individual Learning Plans and/or the ESL companion in the case of English.
^{*} In 2006, approx. 850 schools assessed their students against the 0.25 VELS scale. 2006 benchmarks are therefore based on a subset of schools.
[^] 2008 benchmarks will be calculated in August, when data from all schools has been submitted.

Difference between school mean and state mean⁴, by cohort group



Teacher Judgments against the VELS - Mathematics (secondary)

School no: 7635
School name: Box Hill High School
Source of data: Data retrieved electronically from CASES21.
Explanation: Teacher judgments of student achievement against the VELS.

Structure

Year Level	Year	Total ¹	Assessed ²	Level 1			Level 2			Level 3			Level 4			Level 5			Level 6			Level 6E			School mean	State mean ³	Difference between school and state mean ⁴													
				0.00	0.50	1.00	1.25	1.50	1.75	2.00	2.25	2.50	2.75	3.00	3.25	3.50	3.75	4.00	4.25	4.50	4.75	5.00	5.25	5.50				5.75	6.00	6.25	6.50	6.75								
yr7	2008	152	152														51	25	76														4.79							
yr7	2007	147	147														70	2	75															4.76	4.39	0.37				
yr8	2008	151	150														2	72		1	75													5.25						
yr7	2006																																		4.30					
yr8	2007	145	145													1	9	63		19	53													5.19	4.82	0.38				
yr9	2008	118	116																3	9	55	5	44											5.67						
yr7	2005																																			4.74				
yr8	2006																																			5.59	5.29	0.30		
yr9	2007	131	131					1									1	1	4	81	19	23			1									5.91						
yr10	2008	91	87																	1	43	29			14										6.04	5.72	0.33			
yr8	2005																																				5.21			
yr9	2006																																				6.04	5.72	0.33	
yr10	2007	77	76																		7	53			12	4														
yr9	2005																																					5.60		
yr10	2006																																							
yr10	2005																																							

shading indicates a 'C' grade (at the expected standard) on the VELS scale.

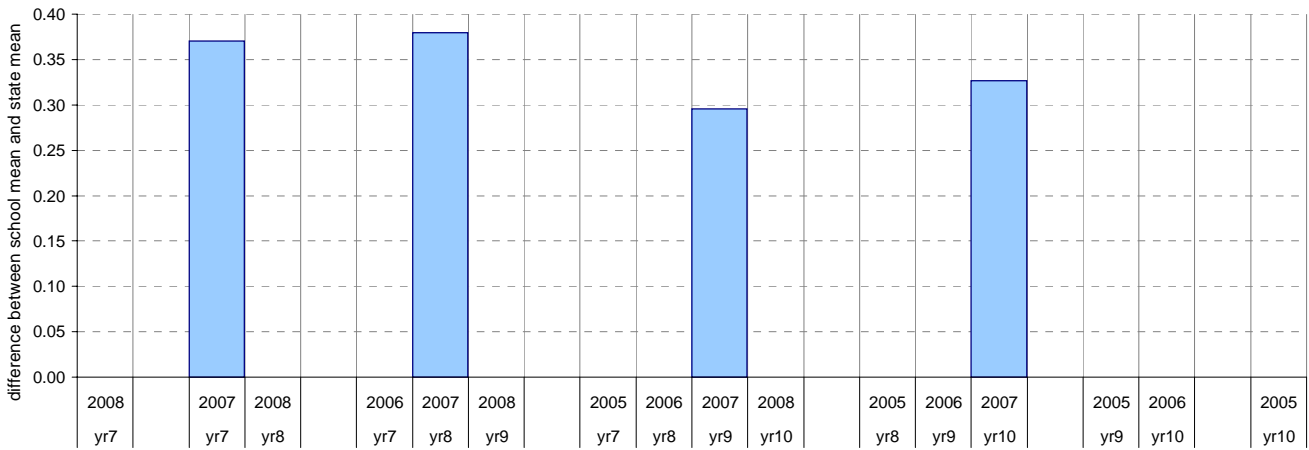
¹ The total number of students eligible to be assessed. This figure will typically match, or be very close to, the Year Level enrolment.

² The number of students assessed against the VELS. The difference between this figure and the total (1) should be accounted for by students assessed against Individual Learning Plans and/or the ESL companion in the case of English.

* In 2006, approx. 850 schools assessed their students against the 0.25 VELS scale. 2006 benchmarks are therefore based on a subset of schools.

^ 2008 benchmarks will be calculated in August, when data from all schools has been submitted.

Difference between school mean and state mean⁴, by cohort group



NAPLAN Year 7 and 9: Reading

School no: 7635

School name: Box Hill High School

Source of data: Victorian Curriculum and Assessment Authority.

Explanation: The National Assessment Program - Literacy and Numeracy (NAPLAN) is conducted each year for students in Years 3, 5, 7 and 9. For more detailed NAPLAN data, refer to the NAPLAN Data Service website at <http://naplands.vcaa.vic.edu.au>. A reference guide for analysing NAPLAN data is available at <http://www.vcaa.vic.edu.au/vcaa/prep10/naplan/schools/analysingnaplandata.pdf>.

Notes: * % student participation = (students who participated in NAPLAN / February enrolments) * 100

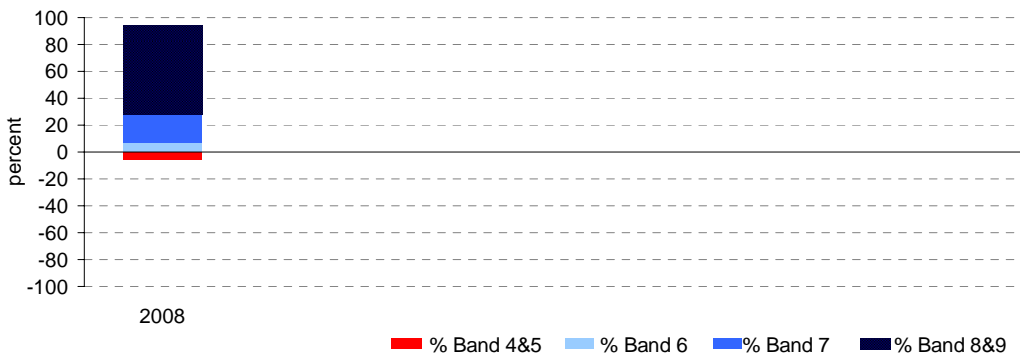
Year 7

	student participation		Percent of students by NAP Band						Mean Scaled Score	
	(n)	(%)*	Band 4	Band 5	Band 6	Band 7	Band 8	Band 9	School	State
2008	145	96	1	5	7	21	28	38	612.1	531.1

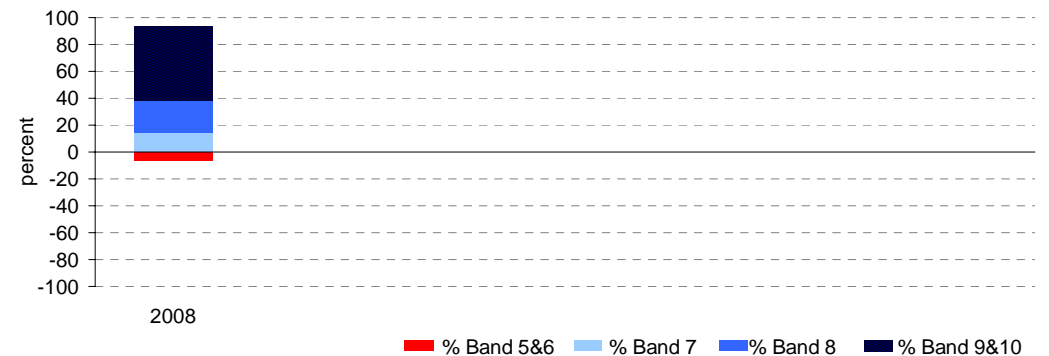
Year 9

	student participation		Percent of students by NAP Band						Mean Scaled Score	
	(n)	(%)*	Band 5	Band 6	Band 7	Band 8	Band 9	Band 10	School	State
2008	135	93	1	6	15	24	33	22	641.8	572.5

Percent of students by NAP Band

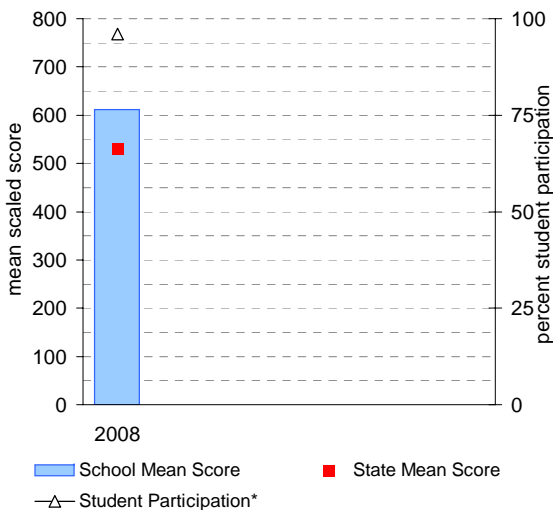


Percent of students by NAP Band

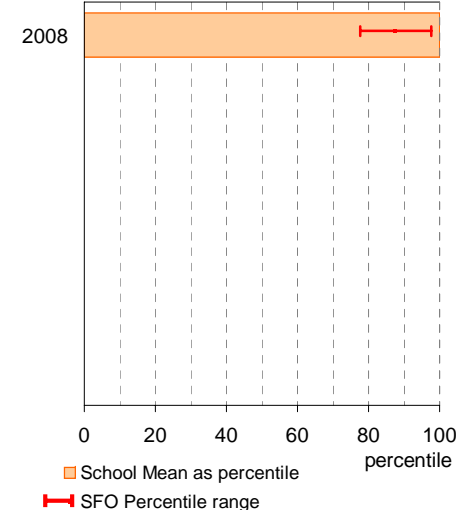


Year 7

School Mean against State Mean, including Participation

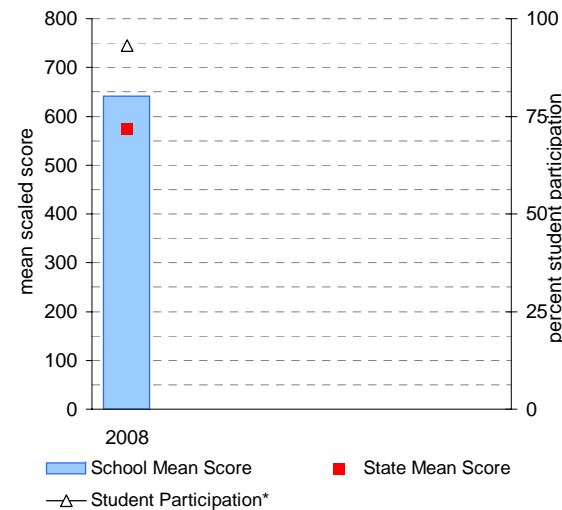


School Mean as percentile against SFO percentile range

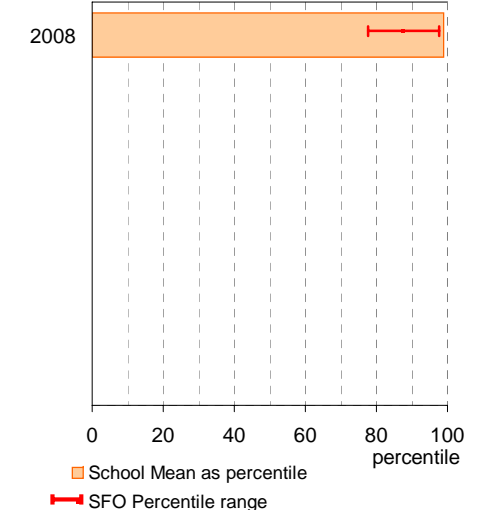


Year 9

School Mean against State Mean, including Participation



School Mean as percentile against SFO percentile range



NAPLAN Year 7 and 9: Writing

School no: 7635

School name: Box Hill High School

Source of data: Victorian Curriculum and Assessment Authority.

Explanation: The National Assessment Program - Literacy and Numeracy (NAPLAN) is conducted each year for students in Years 3, 5, 7 and 9. For more detailed NAPLAN data, refer to the NAPLAN Data Service website at <http://naplands.vcaa.vic.edu.au>. A reference guide for analysing NAPLAN data is available at <http://www.vcaa.vic.edu.au/vcaa/prep10/naplan/schools/analysingnaplandata.pdf>.

Notes: * % student participation = (students who participated in NAPLAN / February enrolments) * 100

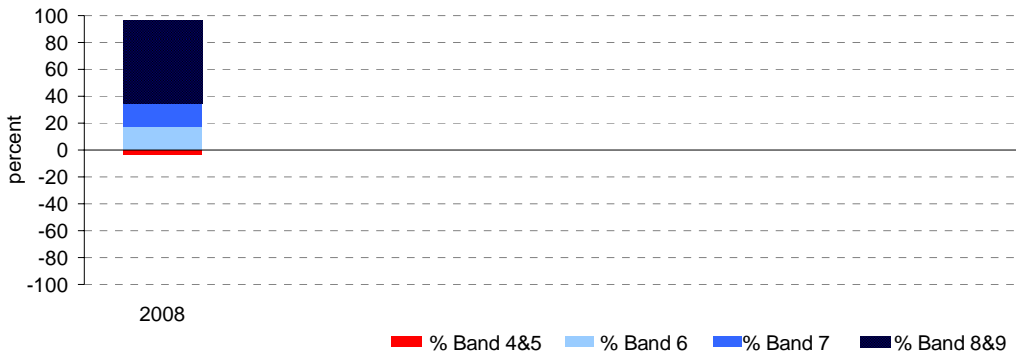
Year 7

	student participation		Percent of students by NAP Band						Mean Scaled Score	
	(n)	(%)*	Band 4	Band 5	Band 6	Band 7	Band 8	Band 9	School	State
2008	143	95	2	1	18	18	27	34	603.9	534.0

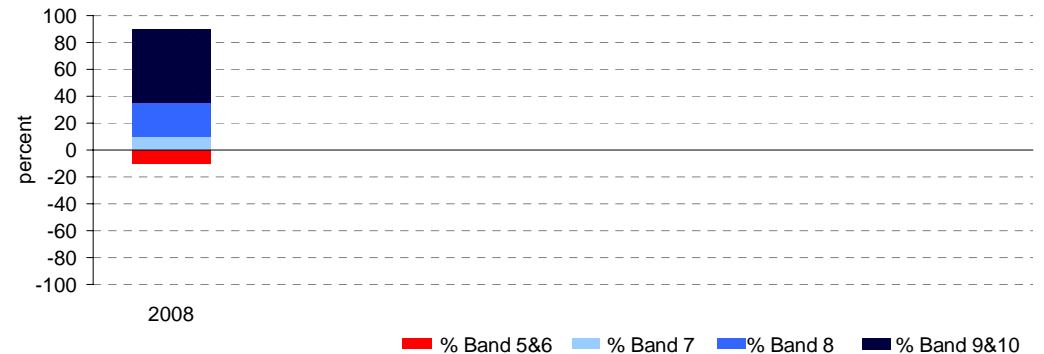
Year 9

	student participation		Percent of students by NAP Band						Mean Scaled Score	
	(n)	(%)*	Band 5	Band 6	Band 7	Band 8	Band 9	Band 10	School	State
2008	131	90	4	6	10	25	27	28	637.8	571.4

Percent of students by NAP Band

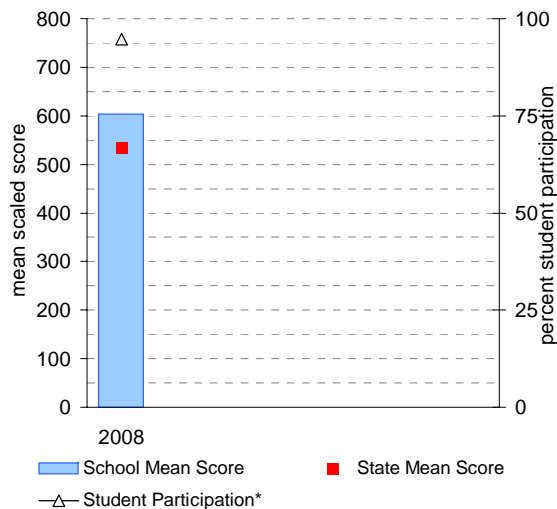


Percent of students by NAP Band

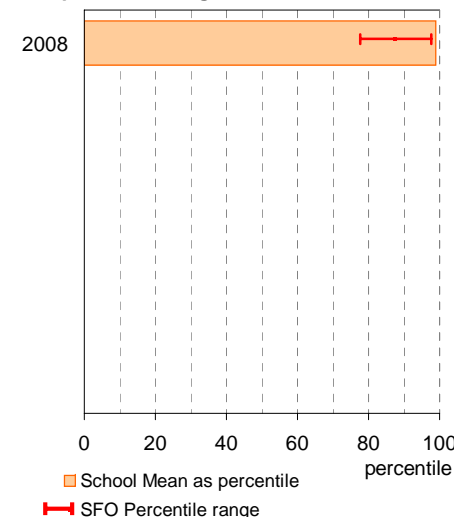


Year 7

School Mean against State Mean, including Participation

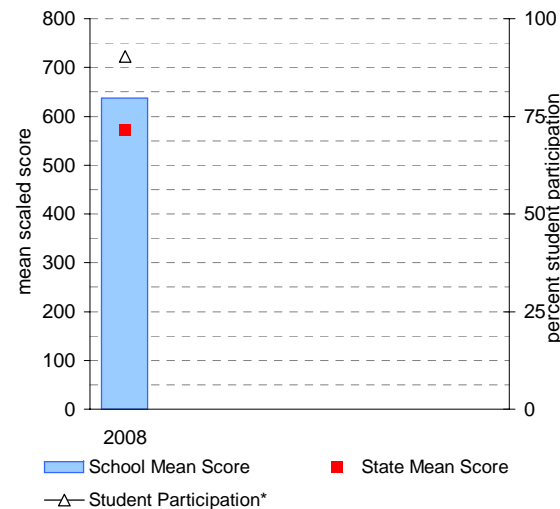


School Mean as percentile against SFO percentile range

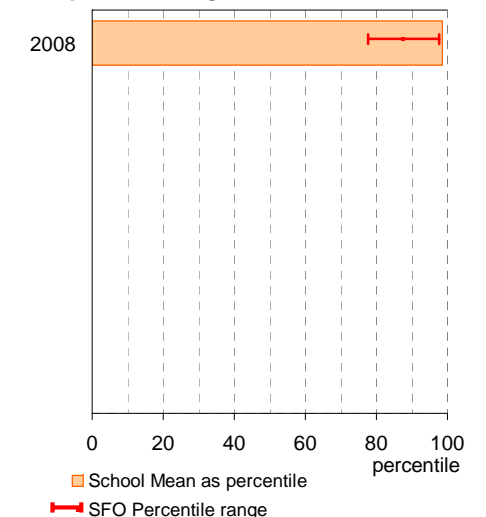


Year 9

School Mean against State Mean, including Participation



School Mean as percentile against SFO percentile range



NAPLAN Year 7 and 9: Numeracy

School no: 7635

School name: Box Hill High School

Source of data: Victorian Curriculum and Assessment Authority.

Explanation: The National Assessment Program - Literacy and Numeracy (NAPLAN) is conducted each year for students in Years 3, 5, 7 and 9. For more detailed NAPLAN data, refer to the NAPLAN Data Service website at <http://naplands.vcaa.vic.edu.au>. A reference guide for analysing NAPLAN data is available at <http://www.vcaa.vic.edu.au/vcaa/prep10/naplan/schools/analysingnaplandata.pdf>.

Notes: * % student participation = (students who participated in NAPLAN / February enrolments) * 100

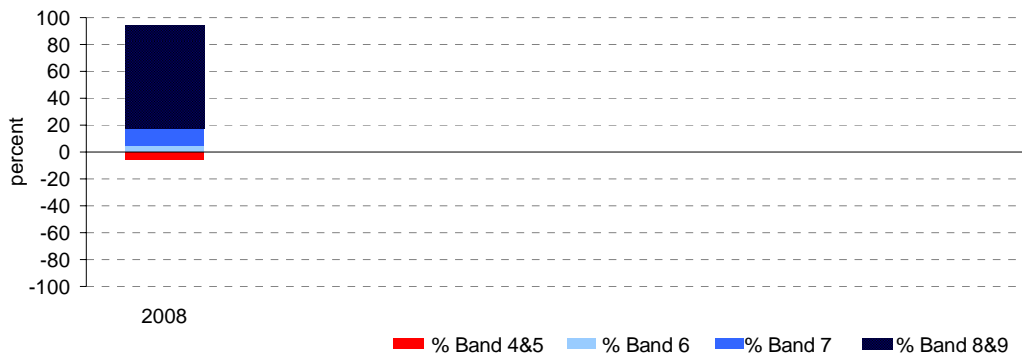
Year 7

	student participation		Percent of students by NAP Band						Mean Scaled Score	
	(n)	(%)*	Band 4	Band 5	Band 6	Band 7	Band 8	Band 9	School	State
2008	145	96	1	4	5	12	21	57	647.6	541.2

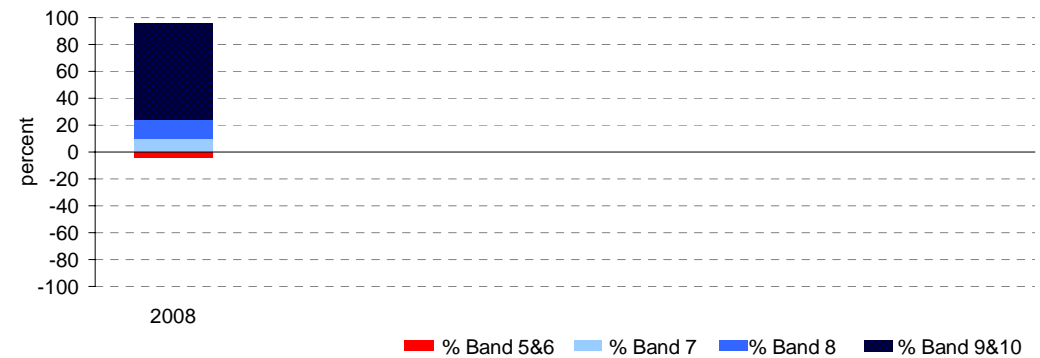
Year 9

	student participation		Percent of students by NAP Band						Mean Scaled Score	
	(n)	(%)*	Band 5	Band 6	Band 7	Band 8	Band 9	Band 10	School	State
2008	133	92	0	5	10	14	26	45	669.9	579.0

Percent of students by NAP Band

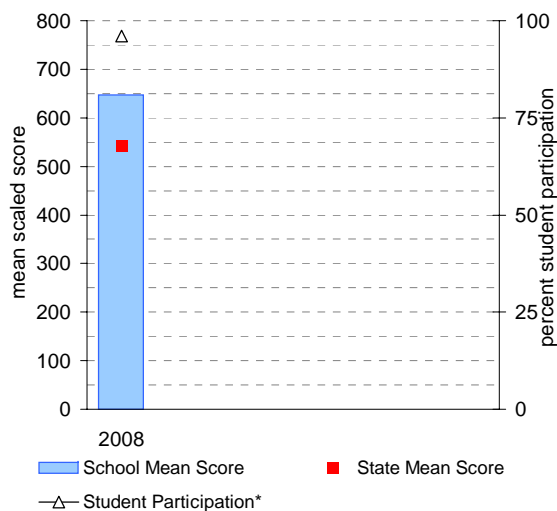


Percent of students by NAP Band

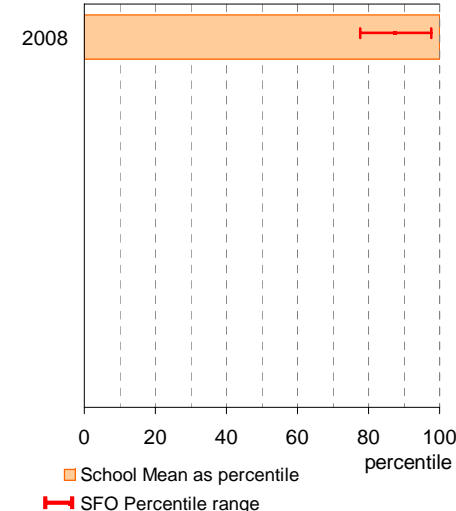


Year 7

School Mean against State Mean, including Participation

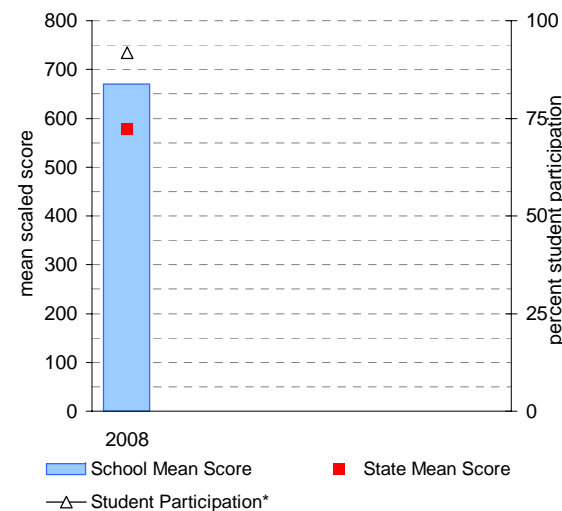


School Mean as percentile against SFO percentile range

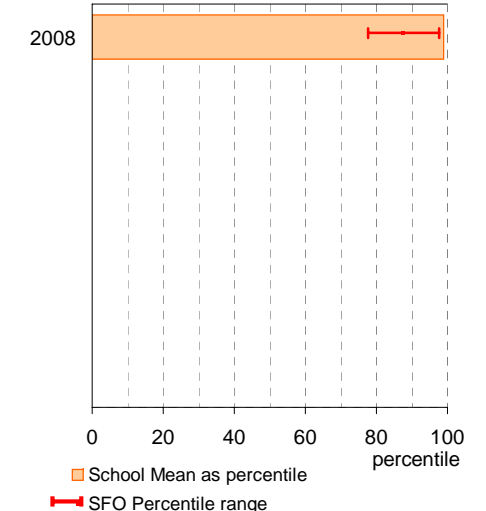


Year 9

School Mean against State Mean, including Participation



School Mean as percentile against SFO percentile range



AIM Year 7 and 9: Reading

School no: 7635

School name: Box Hill High School

Source of data: Victorian Curriculum and Assessment Authority.

Explanation: The Achievement Improvement Monitor (AIM) was a statewide assessment program conducted each year up until and including 2007 for students in Years 3, 5, 7 and 9. This has now been replaced by NAPLAN. For more detailed AIM data, refer to the AIM Data Service website at <http://aimds.vcaa.vic.edu.au>.

Notes: * The school trendline is only plotted when there is data for each calendar year.

** % student participation = (students who participated in AIM / Feb enrolments) * 100

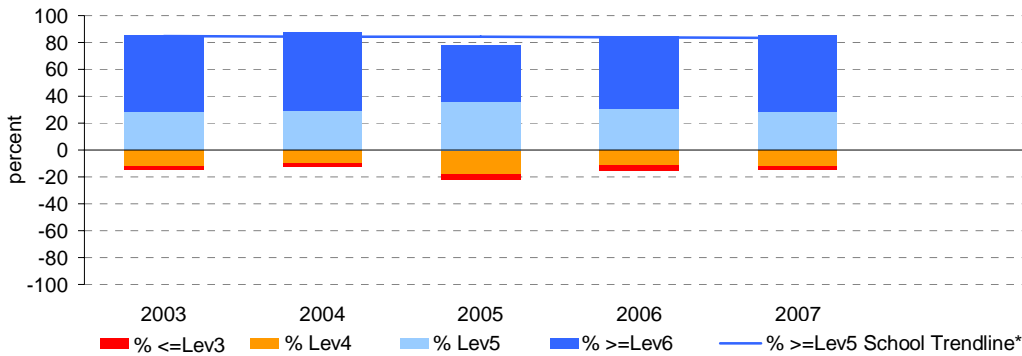
Year 7

	student participation		Percent of students by VEL5 level							Mean CSF / VEL5 Score	
	(n)	(%)**	Lev1	Lev2	Lev3	Lev4	Lev5	Lev6	Lev6E	School	State
2003	136	96	0	0	3	12	28	57	0	4.9	4.1
2004	143	99	0	0	3	10	29	58	0	4.9	4.2
2005	142	96	0	0	4	18	36	42	0	4.7	4.2
2006	139	97	0	0	4	12	31	54	0	4.8	4.2
2007	147	98	0	0	3	12	28	57	0	4.8	4.1

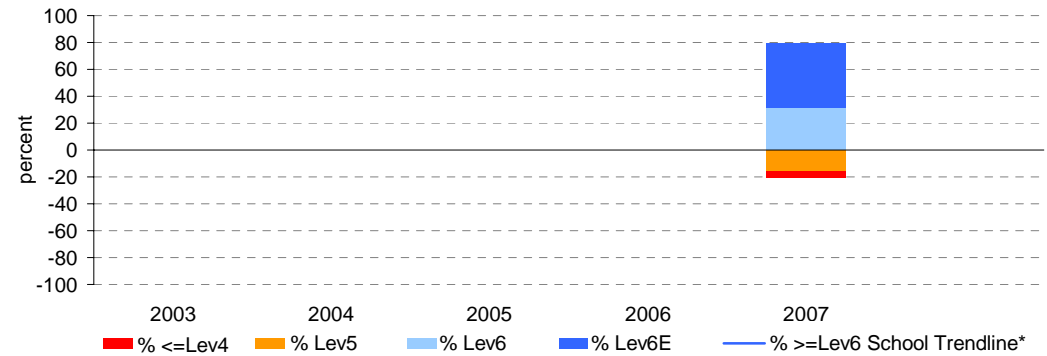
Year 9

	student participation		Percent of students by VEL5 level							Mean CSF / VEL5 Score	
	(n)	(%)**	Lev1	Lev2	Lev3	Lev4	Lev5	Lev6	Lev6E	School	State
2003											
2004											
2005											
2006											5.1
2007	156	96	0	0	0	5	16	31	47	5.7	5.1

Percent of students by VEL5 level

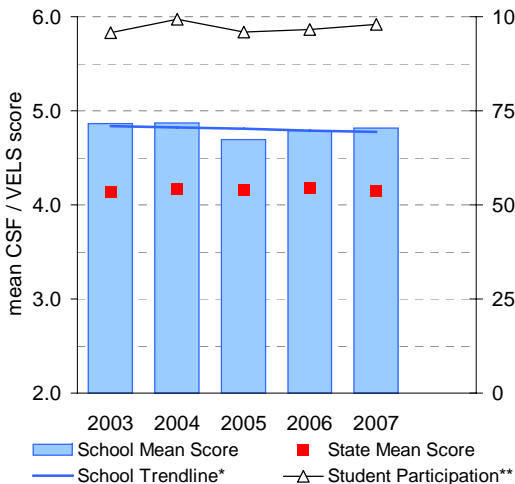


Percent of students by VEL5 level

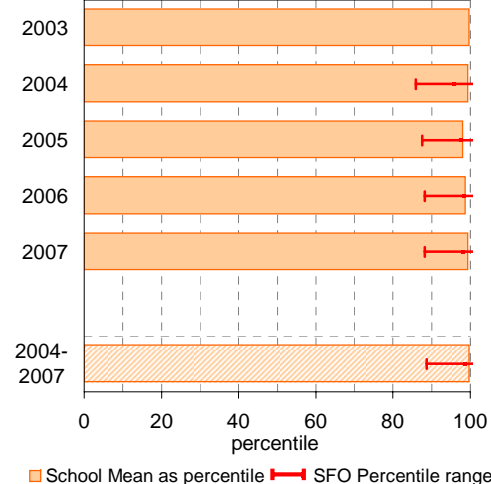


Year 7

School Mean against State Mean, including Participation

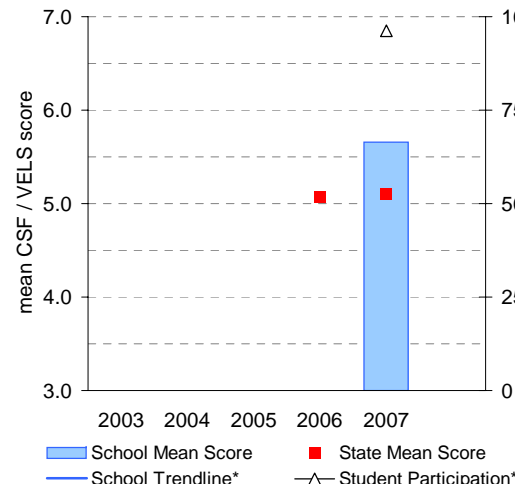


School Mean as percentile against SFO percentile range

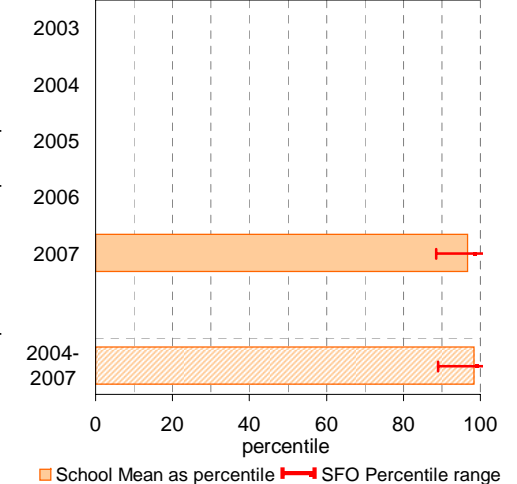


Year 9

School Mean against State Mean, including Participation



School Mean as percentile against SFO percentile range



AIM Year 7 and 9: Mathematics

School no: 7635

School name: Box Hill High School

Source of data: Victorian Curriculum and Assessment Authority.

Explanation: The Achievement Improvement Monitor (AIM) was a statewide assessment program conducted each year up until and including 2007 for students in Years 3, 5, 7 and 9. This has now been replaced by NAPLAN. For more detailed AIM data, refer to the AIM Data Service website at <http://aimds.vcaa.vic.edu.au>.

Notes: * The school trendline is only plotted when there is data for each calendar year.
 ** % student participation = (students who participated in AIM / Feb enrolments) * 100

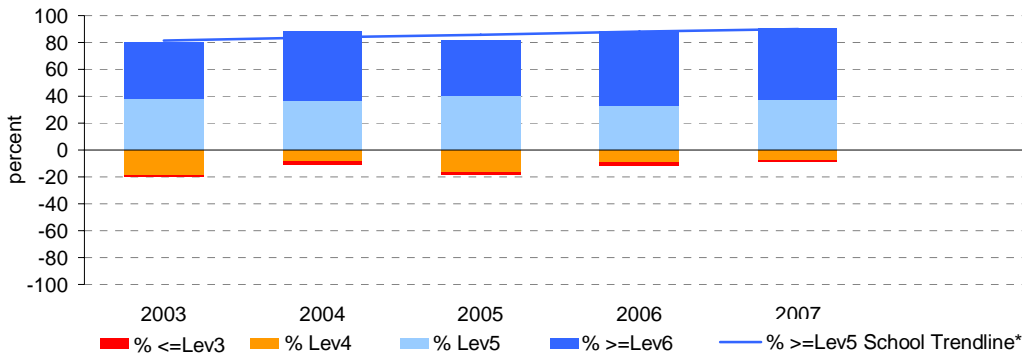
Year 7

	student participation		Percent of students by VEL5 level							Mean CSF / VEL5 Score	
	(n)	(%)**	Lev1	Lev2	Lev3	Lev4	Lev5	Lev6	Lev6E	School	State
2003	131	92	0	0	1	19	38	42	0	4.6	4.0
2004	142	99	0	0	3	8	37	52	0	4.8	4.0
2005	145	98	0	0	2	17	41	41	0	4.7	4.0
2006	134	93	0	0	3	9	33	55	0	4.8	4.0
2007	144	96	0	0	1	8	38	53	0	4.8	4.1

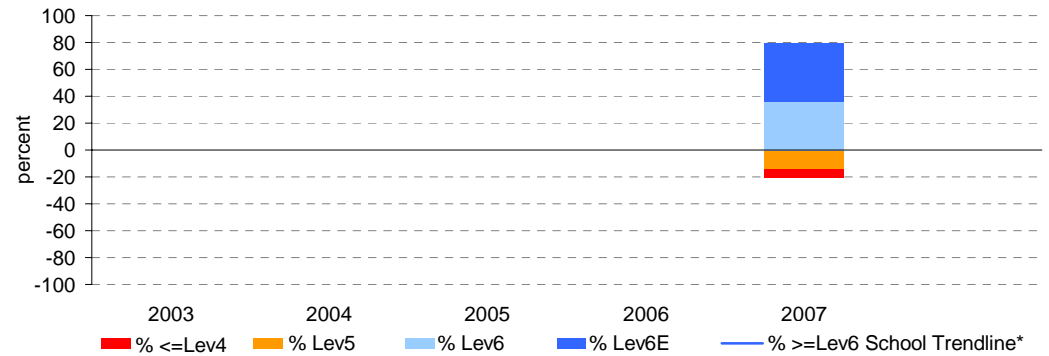
Year 9

	student participation		Percent of students by VEL5 level							Mean CSF / VEL5 Score	
	(n)	(%)**	Lev1	Lev2	Lev3	Lev4	Lev5	Lev6	Lev6E	School	State
2003											
2004											
2005											
2006											4.8
2007	153	94	0	0	0	6	14	36	44	5.6	4.8

Percent of students by VEL5 level

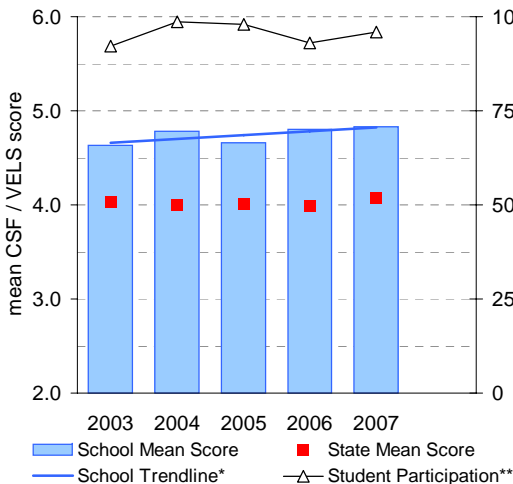


Percent of students by VEL5 level

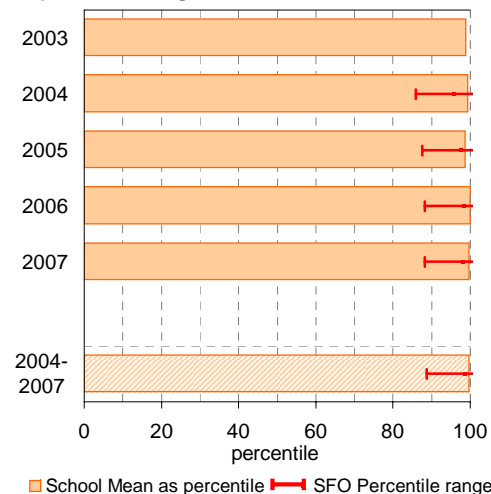


Year 7

School Mean against State Mean, including Participation

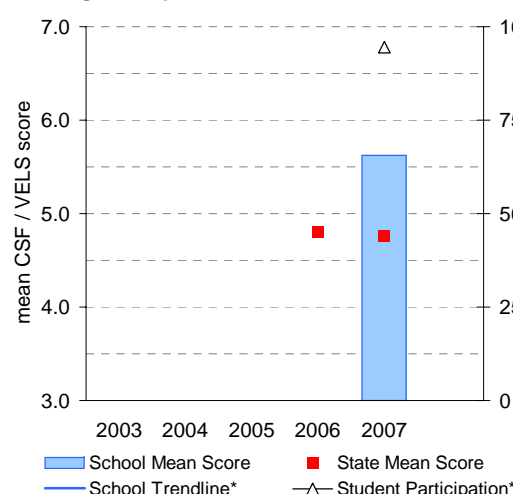


School Mean as percentile against SFO percentile range

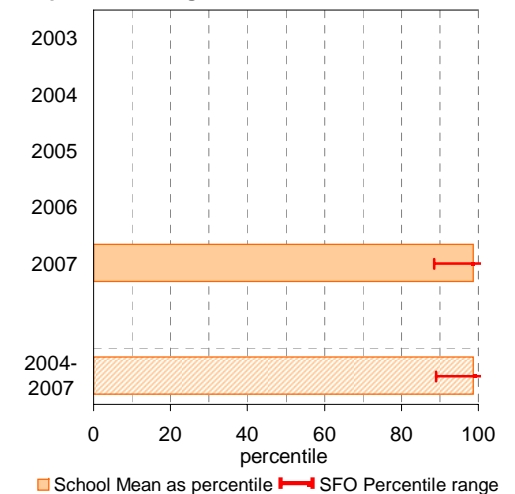


Year 9

School Mean against State Mean, including Participation



School Mean as percentile against SFO percentile range



VCE

School no: 7635

School name: Box Hill High School

Explanation: Only 2008 studies, which at least 1 student completed, are included.

Source of data: Victorian Curriculum and Assessment Authority.

Notes:	2004		2005		2006		2007		2008	
	No. of students	school mean	No. of students	school mean	No. of students	school mean	No. of students	school mean	No. of students	school mean
- After allstudy, English, Further Maths and Maths Methods, studies are listed in descending order of the number of students in the latest year.										
- From 2005, VET study scores are included.										
- From 2005, data is based on 'reported' study scores, not 'achieved' study scores.										
allstudy		31.4		31.4		31.1		31.6		31.9
English EN01	81	33.7	80	34.5	83	34.0	70	31.9	105	32.1
Further Mathematics MA07	23	31.7	38	31.5	47	34.1	65	32.1	86	34.0
Mathematical Methods MA08	120	31.9	105	30.6	94	31.0	110	30.2	142	32.6
Physics PH03	110	29.6	74	27.9	47	28.0	54	29.5	91	30.5
Specialist Mathematics MA09	77	29.8	63	28.5	61	28.4	46	26.8	68	29.4
English ESL EN09	62	29.8	48	28.0	53	29.0	49	30.7	52	27.4
Chemistry CH03	47	32.6	46	34.2	56	32.2	27	34.7	50	35.5
Biology BI03	22	32.0	28	34.1	41	31.5	67	34.7	49	35.2
Psychology PY03	21	36.1	34	33.9	36	36.5	43	34.9	48	37.6
Chinese 1st Language LO04	37	28.3	37	27.5	46	28.6	47	28.7	30	26.3
Accounting AC03	25	31.5	23	29.8	17	29.7	28	31.6	29	31.0
Health & Human Dev. HH03	1	29.0	23	32.6	20	30.1	36	37.7	28	35.6
IT Applications IT02	16	32.4	26	32.6	20	31.0	17	33.2	24	29.2
Geography GE03	10	36.0			15	29.5	19	31.2	22	30.7
Physical Ed. PE03			26	32.7	13	34.9	33	32.2	20	34.4
History (Revolutions) HI13	7	36.4	8	32.1	11	33.8	1	21.0	17	30.8
Legal Studies LS03	22	32.5	30	33.3	19	31.6	19	30.6	16	32.3
Business Management BM03	22	34.1	22	32.1	39	28.6	22	32.0	15	30.8
Chinese 2nd Language LO39	18	29.0	8	33.9	4	27.3	11	29.3	15	29.9
Literature LI01	12	32.8	14	32.4	16	28.9	13	29.8	13	30.4
German LO10	15	28.8	1	26.0	7	31.1	12	29.8	12	31.2
National Politics NP03					14	29.1			12	25.2
Vietnamese LO31	3	35.3			4	26.8	6	33.2	12	30.0
Economics EC03	9	28.1					1	31.0	11	28.4
Software Development IT03	17	30.9	23	33.1	20	31.4	13	30.9	11	33.0
Studio Arts SA03			10	33.7	7	36.3	12	31.6	10	26.4
Visual Communication & Design VC03	4	41.8	1	26.0	1	37.0	1	38.0	8	34.8
Food & Tech. FY03	13	33.6							7	33.7
Chinese 2nd Language Advanced LO48	11	29.9	11	33.8	2	29.5	6	30.2	5	27.6
Music Performance: Solo MC02	5	31.0	1	27.0	7	32.1	2	33.0	4	37.3
Greek LO22									2	28.5
Japanese 2nd Language LO46	2	31.0							2	41.5
Dance DA03			2	38.0			2	33.5	1	34.0
Indonesian 2nd Language LO40					2	41.5			1	42.0
Korean 1st Language LO37			2	38.0	1	31.0			1	31.0
Persian LO32	3	35.7	1	32.0					1	31.0
Russian LO24	1	33.0	1	32.0					1	25.0
Tamil LO43									1	31.0

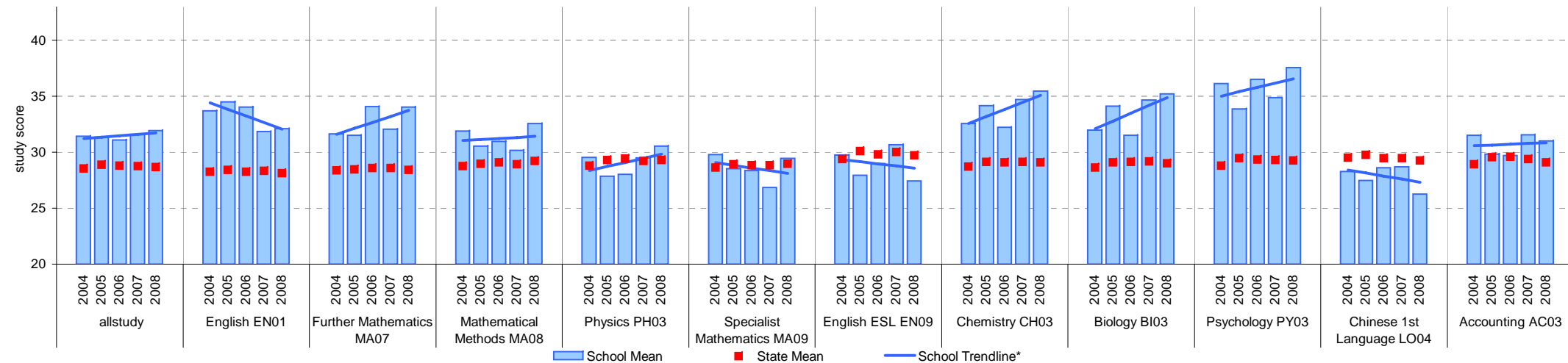
VCE

School no: 7635

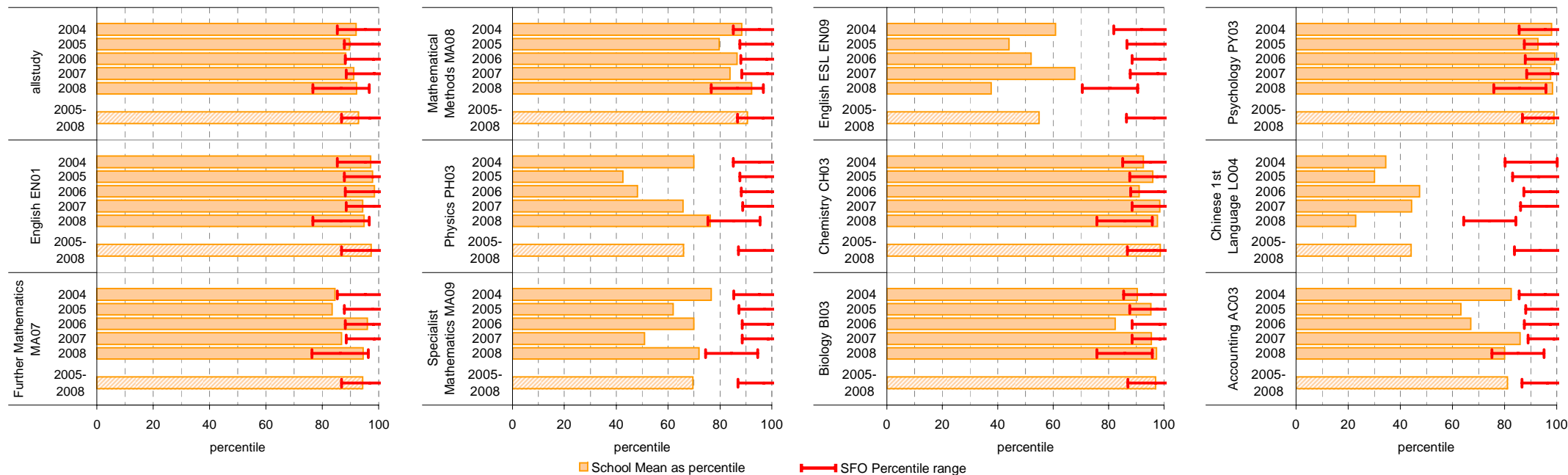
School name: Box Hill High School

Source of data: Victorian Curriculum and Assessment Authority.

School Mean against State Mean



School Mean as percentile against SFO percentile range



VCE (cont'd)

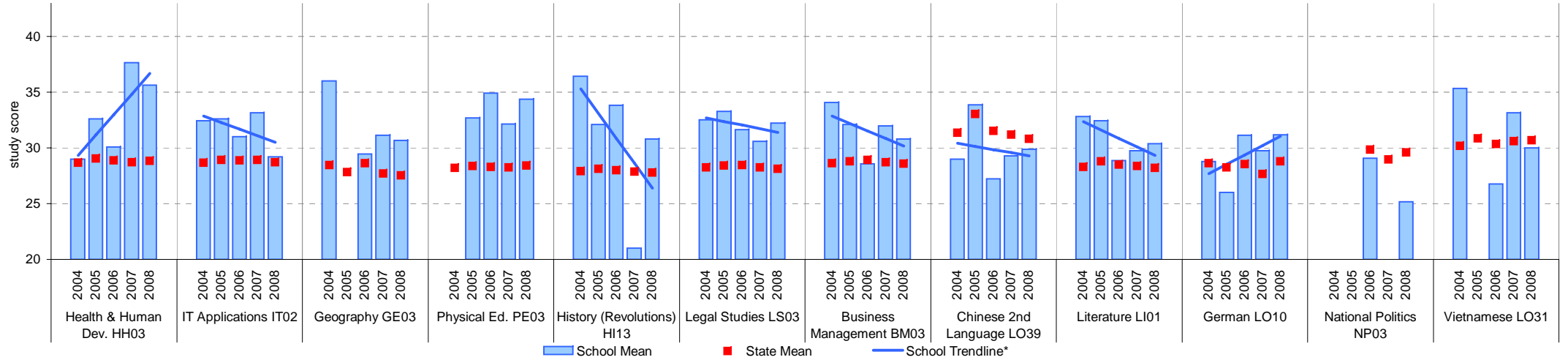
School no: 7635

School name: Box Hill High School

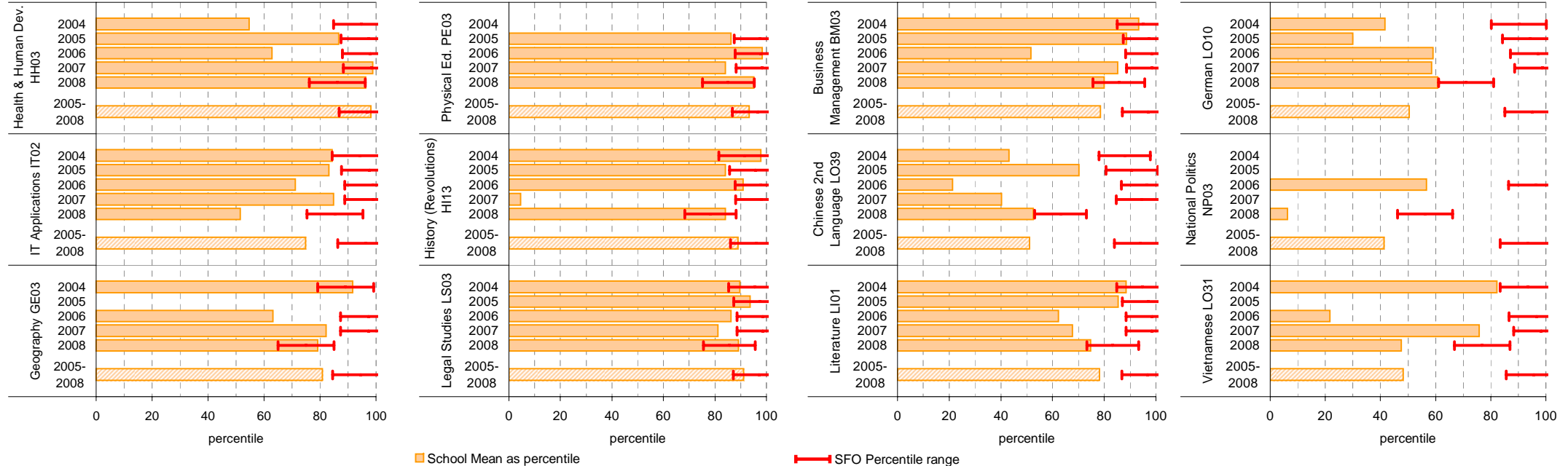
Source of data: Victorian Curriculum and Assessment Authority.

School Mean against State Mean

- Notes:
- * The school trendline is only plotted when there is data for each calendar year.
 - After allstudy, EN01, MA07 and MA08, the remaining studies are charted in order of the number of students who completed that study in 2008, from highest to lowest.
 - From 2005, VET study scores are included.
 - From 2005, data is based on 'reported' study scores, not the 'achieved' study scores.
 - Only the results of the 32 studies with the most students (apart from EN01, MA07 and MA08) are charted.



School Mean as percentile against SFO percentile range



VCE (cont'd)

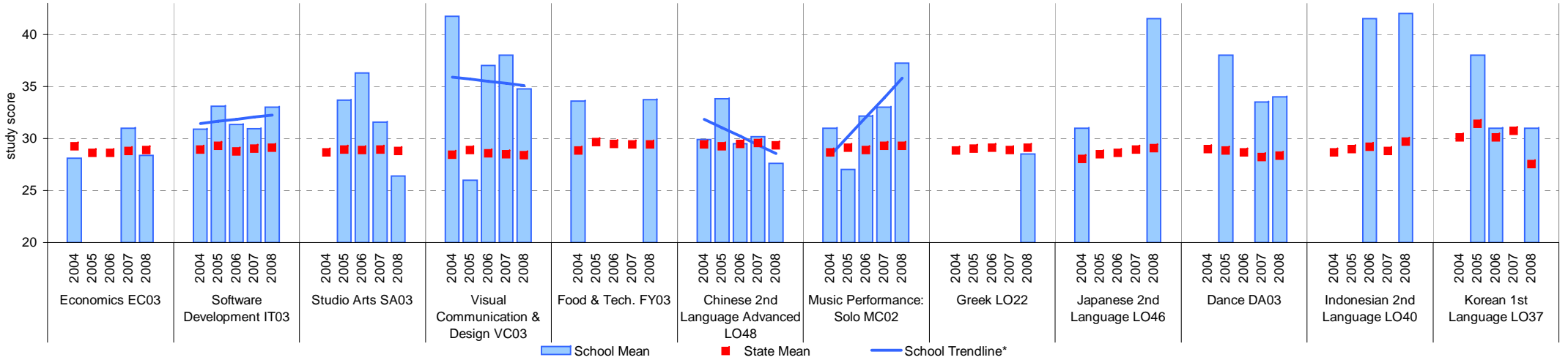
School no: 7635

School name: Box Hill High School

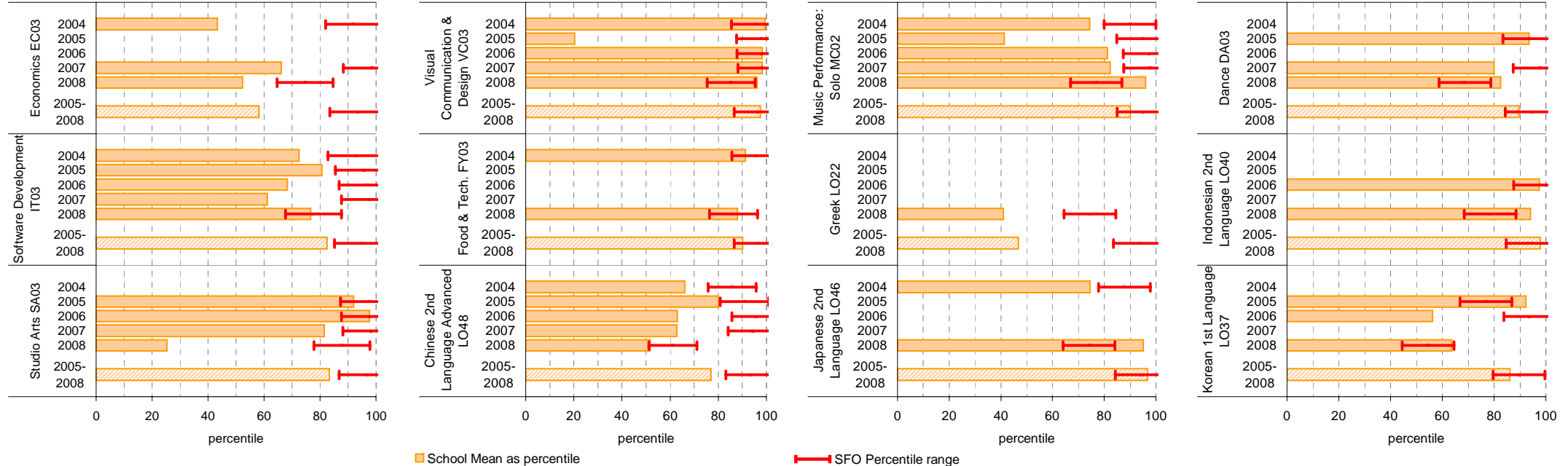
Source of data: Victorian Curriculum and Assessment Authority.

School Mean against State Mean

- Notes:
- * The school trendline is only plotted when there is data for each calendar year.
 - After allstudy, EN01, MA07 and MA08, the remaining studies are charted in order of the number of students who completed that study in 2008, from highest to lowest.
 - From 2005, VET study scores are included.
 - From 2005, data is based on 'reported' study scores, not the 'achieved' study scores.
 - Only the results of the 32 studies with the most students (apart from EN01, MA07 and MA08) are charted.



School Mean as percentile against SFO percentile range

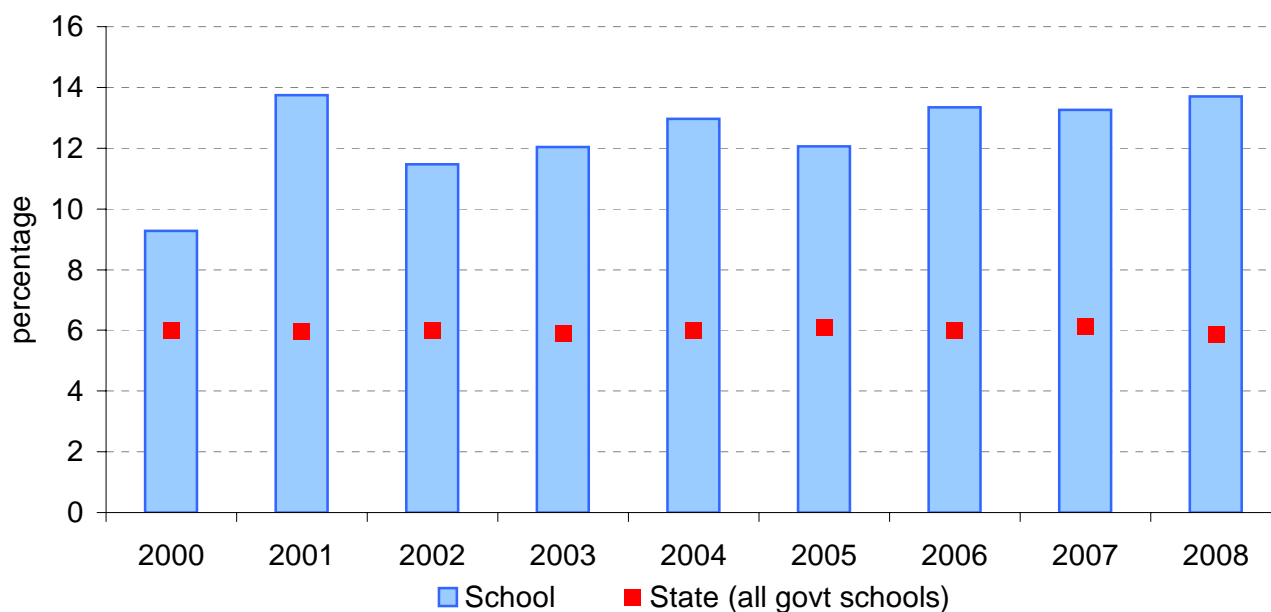


VCE: Study Scores of 40 or more

School no:	7635
School name:	Box Hill High School
Explanation:	Of all VCE study scores, the percentage that were 40 or more.
Source of data:	Victorian Curriculum and Assessment Authority.

Year	School		State (all govt schools)
	Total study scores	% 40 or more*	% 40 or more
2000	464	9.3	6.0
2001	546	13.7	6.0
2002	654	11.5	6.0
2003	748	12.0	5.9
2004	826	13.0	6.0
2005	796	12.1	6.1
2006	809	13.3	6.0
2007	845	13.3	6.1
2008	1022	13.7	5.9

VCE percentage of study scores of 40 or more*, 2000 to 2008



Note:

- * Prior to 2005, this data may not match the information published in *The Age*. Data presented on this page prior to 2005 does not include study scores from the small number of VET studies that are given study scores.
- From 2005, VET study scores are included.
- From 2005, data is based on 'reported' study scores, not 'achieved' study scores.

VET

School no: 7635
School name: Box Hill High School
Source of data: Victorian Curriculum and Assessment Authority.

Notes: * - The school trendline is only plotted when there is data for each calendar year.

1 - UOC = Unit(s) of Competence.

2 - % students based on yr10, 11 & 12 August enrolments.

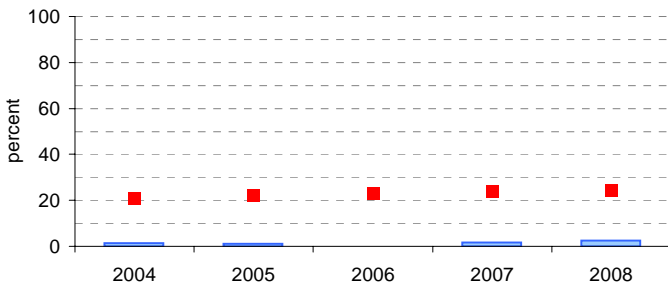
3 - Only includes students undertaking at least 1 UOC.

More detailed information is available on the VASS system provided by VCAA.

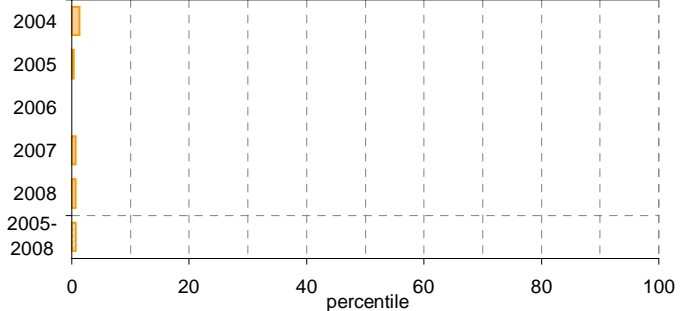
Participation						Completion			
		School			State		School		State
Year	Level	No. students undertaking at least 1 UOC ¹	% students ² undertaking at least 1 UOC ¹	Avg no. UOCs ¹ undertaken per student ³	% students ² undertaking at least 1 UOC ¹	Avg no. UOCs ¹ undertaken per student ³	No. UOCs ¹ with satisfactory result	% UOCs ¹ with satisfactory result	% UOCs ¹ with satisfactory result
2004	10	-	-	-			-	-	
	11	2	1.5	9			9	50	
	12	-	-	-			-	-	
	10-12	2	1.5	9	20.7	11.9	9	50	71.3
2005	10	-	-	-			-	-	
	11	2	1.4	2			4	100	
	12	1	0.8	16			0	0	
	10-12	3	1.1	6.7	22.3	11.9	4	20	72.6
2006	10	-	-	-			-	-	
	11	-	-	-			-	-	
	12	-	-	-			-	-	
	10-12	-	-	-	23.0	12.0	-	-	75.6
2007	10	1	0.6	23			23	100	
	11	3	1.7	13.7			19	46.3	
	12	4	3.3	17			32	47.1	
	10-12	8	1.7	16.5	23.8	11.7	74	56.1	76.4
2008	10	4	2.1	16.3			38	58.5	
	11	3	1.5	13.3			20	50	
	12	5	5	14			51	72.9	
	10-12	12	2.4	14.6	24.6	12.0	109	62.3	76.7

Participation - % Yr10-12 students² undertaking at least 1 UOC¹

School against State

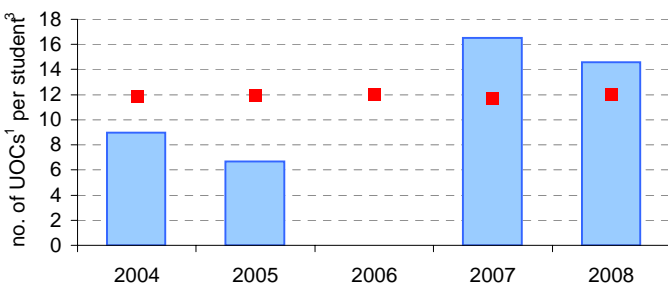


School as percentile

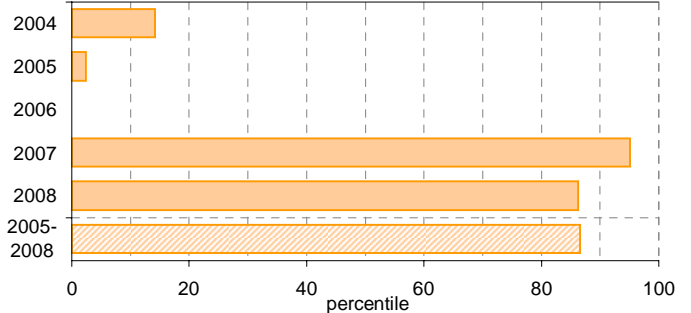


Avg no. UOCs¹ undertaken per student³

School Mean against State Mean

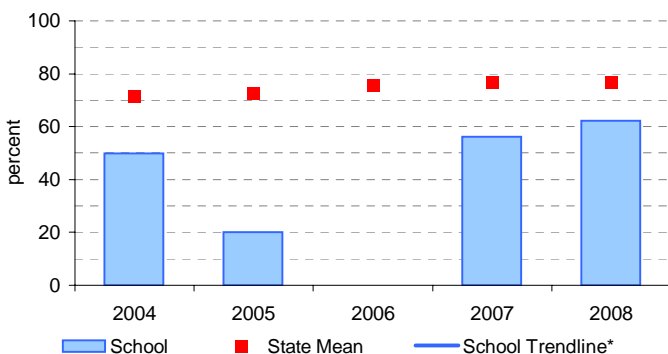


School Mean as percentile

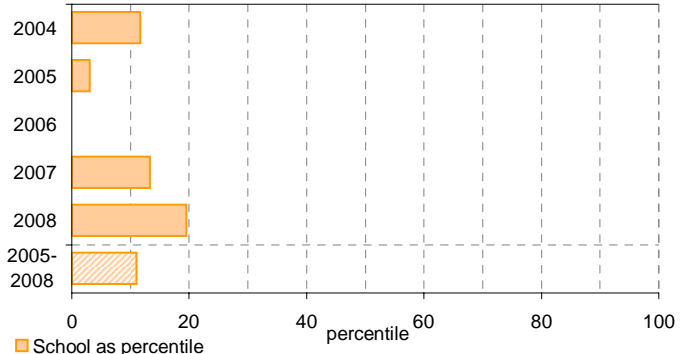


Completion - % UOCs¹ with satisfactory result

School against State



School as percentile



VCAL

School no: 7635
School name: Box Hill High School
Explanation: 'No. of VCAL credits undertaken' is calculated by summing the number of credits undertaken by each VCAL student across all VCAL students.

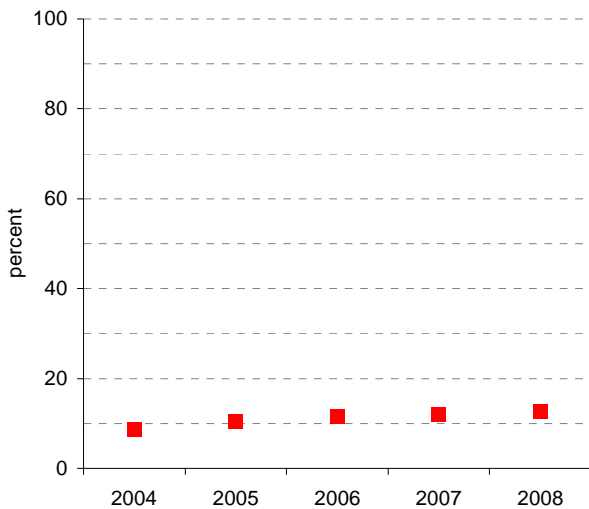
Notes: * - The school trendline is only plotted when there is data for each calendar year.

1 - No. and % students based on yr11 & 12 August enrolments.

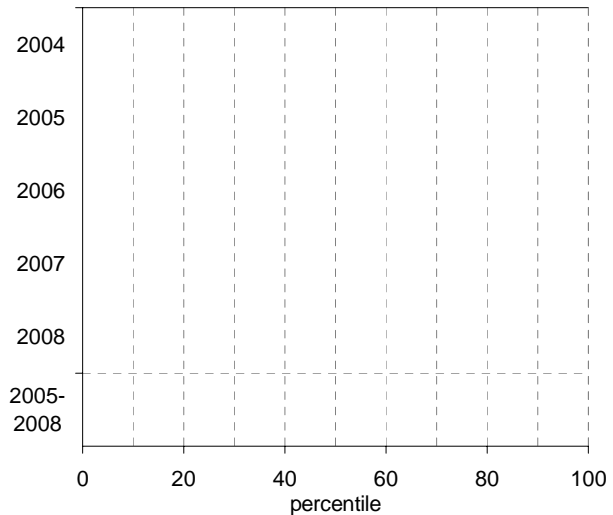
Source of data: Victorian Curriculum and Assessment Authority.
 More detailed information is available on the VASS system provided by VCAA.

Year	Year Level	Participation			Completion		
		No. students ¹	No. students undertaking VCAL	% students ¹ undertaking VCAL	No. VCAL unit credits undertaken	% satisfactory completion of VCAL credits	% satisfactory completion of VCAL credits
2004	11-12	-	-	-	-	-	70.4
2005	11-12	-	-	-	-	-	72.9
2006	11-12	-	-	-	-	-	77.7
2007	11-12	-	-	-	-	-	76.5
2008	11-12	-	-	-	-	-	75.8

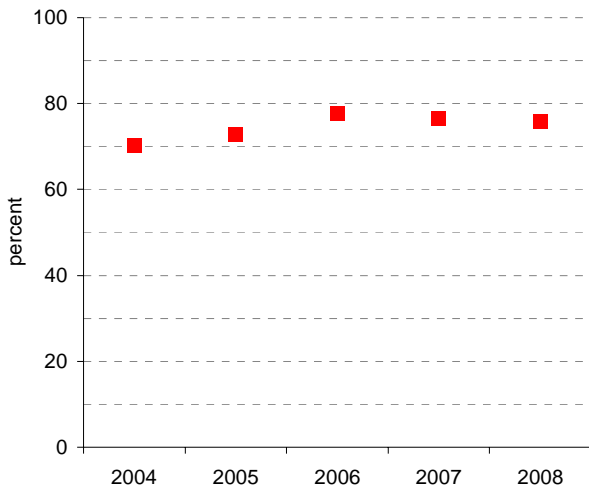
Participation - % Yr11-12 students¹ undertaking VCAL School against State



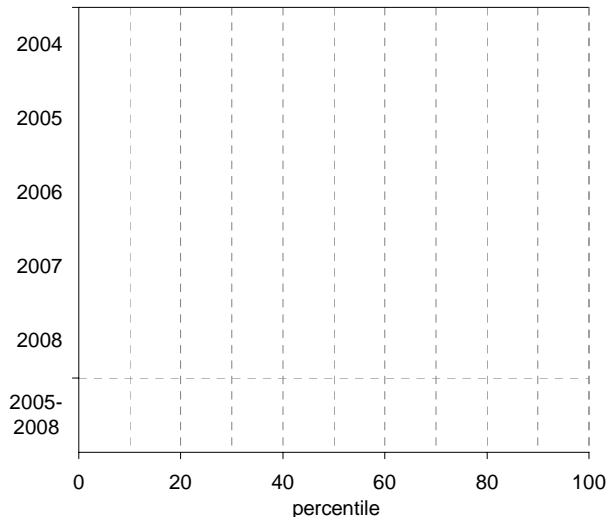
School as percentile



Completion - % satisfactory completion of VCAL credits School against State



School as percentile



■ School
 ■ State Mean
 — School Trendline*
 ■ School as percentile

Teacher Assessment of Student Progress (PSD students)

School no: 7635

School name: Box Hill High School

Explanation: Teachers assess their students' progress against the 8 VELS Domains / CSF KLAs using a 6-point scale (students in special schools and those who cannot be assessed against the VELS / CSF).

Source of data: Data transmitted from school to DEECD via an online web-form.

	No progress (%)	Little progress (%)	Satisfactory progress (%)	Good progress (%)	Very good progress (%)	Excellent progress (%)	Total students assessed ¹ (no.)
--	--------------------	---------------------------	---------------------------------	-------------------------	------------------------------	------------------------------	--

2004 (by CSF KLA)

English
Mathematics
Science
Technology
The Arts
H&PE
SOSE

2005 (by CSF KLA)

English
Mathematics
Science
Technology
The Arts
H&PE
SOSE

2006 (by VELS Domain)

English
Mathematics
Science
ICT
The Arts
H&PE
Civics & Citizenship

2007 (by VELS Domain)

English
Mathematics
Science
ICT
The Arts
H&PE
Civics & Citizenship

2008 (by VELS Domain)

English
Mathematics
Science
ICT
The Arts
H&PE
Civics & Citizenship

2007 Secondary state benchmarks (by VELS Domain)*

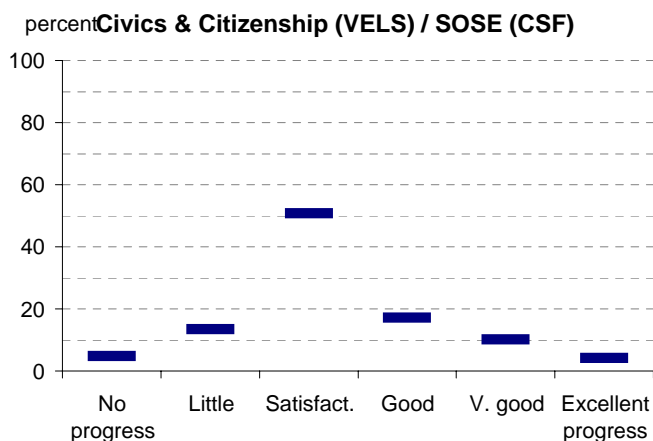
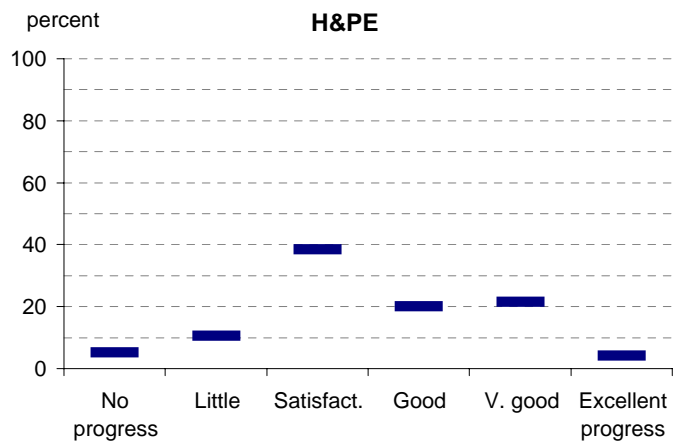
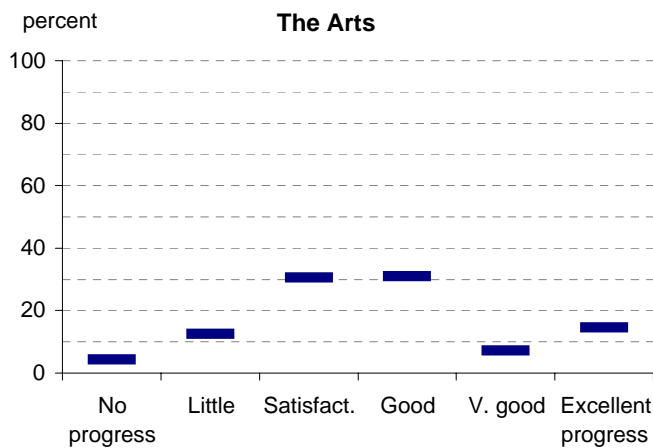
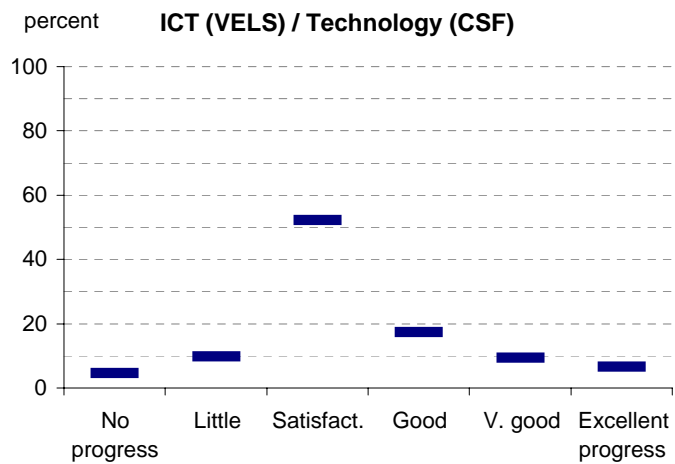
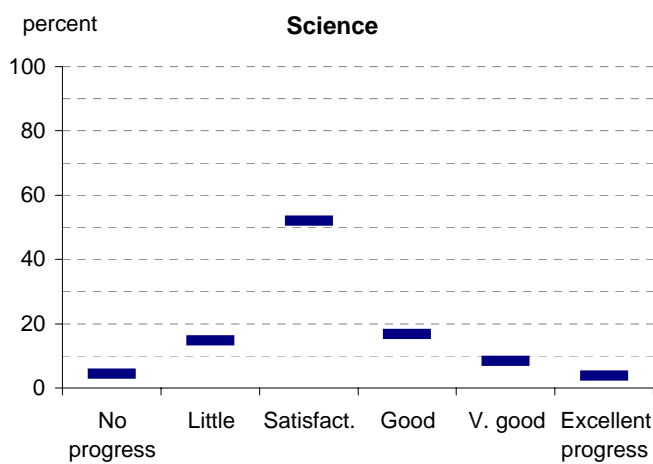
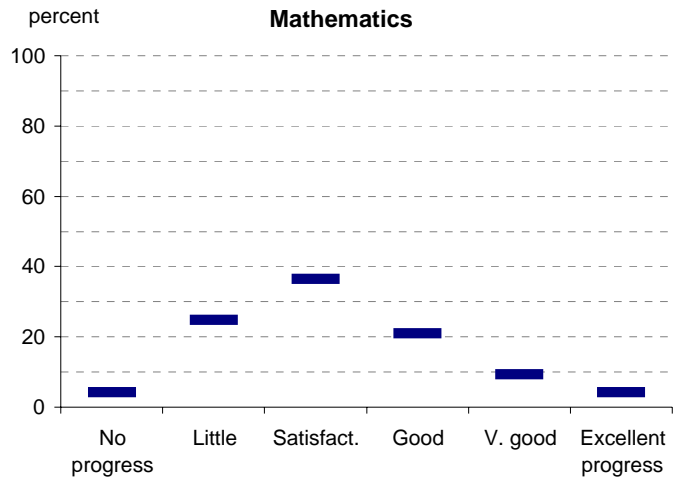
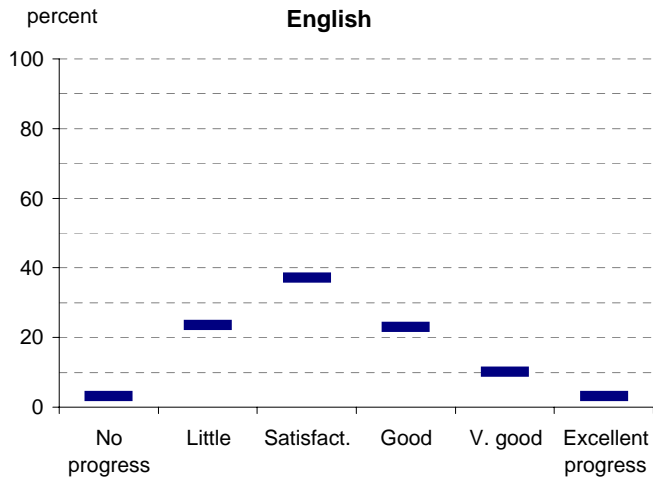
English	3	24	37	23	10	3
Mathematics	4	25	36	21	9	4
Science	4	15	52	17	8	4
ICT	5	10	52	17	9	7
The Arts	4	12	31	31	7	14
H&PE	5	11	39	20	21	4
Civics & Citizenship	5	13	51	17	10	4

Notes: ¹ If schools provided percentages only, it is not possible to report the number of students assessed. In these cases, the total percentage (100) will be shown.

* 2008 benchmarks will be calculated in August, when data from all schools has been submitted.

Teacher Assessment of Student Progress (PSD students)

School no: 7635
 School name: Box Hill High School



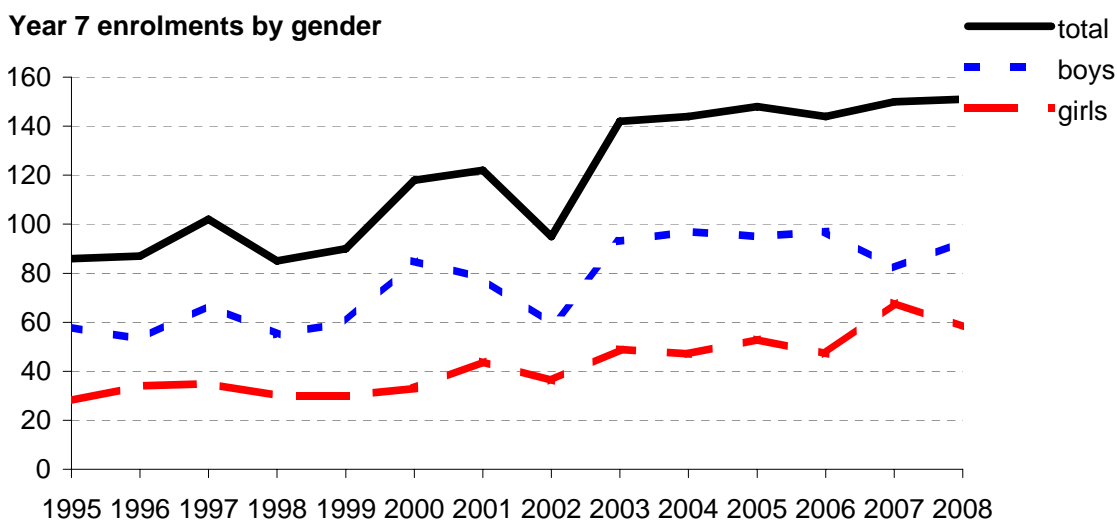
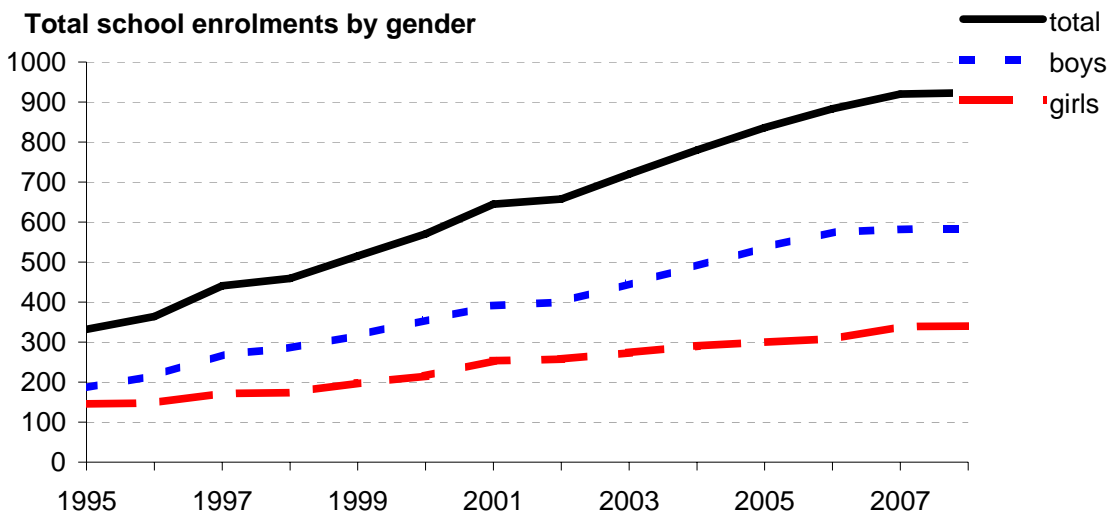
- 2004 (by CSF KLA)
- 2005 (by CSF KLA)
- 2006 (by VELS Domain)
- 2007 (by VELS Domain)
- 2008 (by VELS Domain)
- 2007 Secondary state benchmarks (by VELS Domain)*

Notes: * 2008 benchmarks will be calculated in August, when data from all schools has been submitted.

Enrolments

School no: 7635
School name: Box Hill High School
Explanation: Enrolments at February census.
Source of data: February census.

Year	Total school enrolment			Prep enrolment			Year 7 enrolments		
	boys	girls	total	boys	girls	total	boys	girls	total
1995	186	146	332				58	28	86
1996	216	148	364				53	34	87
1997	269	172	441				67	35	102
1998	285	174	459				55	30	85
1999	317	198	515				60	30	90
2000	355	216	570				85	33	118
2001	391	254	645				78	44	122
2002	400	258	658				59	36	95
2003	446	274	720				93	49	142
2004	490	291	780				97	47	144
2005	537	300	836				95	53	148
2006	576	308	883				97	47	144
2007	582	339	920				82	68	150
2008	584	340	923				93	58	151



Apparent Student Retention

Note: * The school trendline is only plotted when there is data for each calendar year.

School no: 7635

School name: Box Hill High School

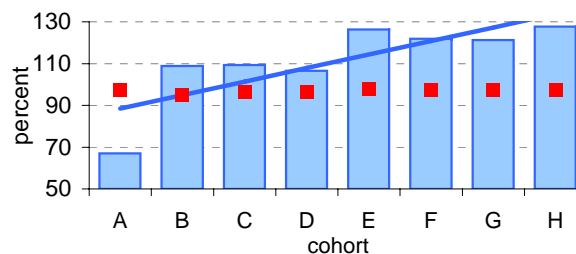
Explanation: Apparent retention rates are based on enrolments. For example, Year 7Feb-12Aug apparent retention refers to year 12 enrolment of students in full-time school education in August expressed as a percentage of year 7 enrolments in February five years earlier.

Source of data: February and August census.

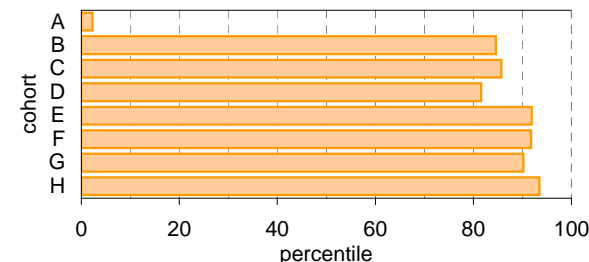
Year 7 (Feb) - 10 (Aug)

	Cohorts:	A	B	C	D	E	F	G	H
Year 7		1998	1999	2000	2001	2002	2003	2004	2005
Year 10		2001	2002	2003	2004	2005	2006	2007	2008
Year 7 (Feb)	no.	85	90	118	122	95	142	144	148
Year 10 (Aug)	no.	57	98	129	130	120	173	174.7	189
Year 7 (Feb) - 10 (Aug)	%	67.1	108.9	109.3	106.6	126.3	121.8	121.3	127.7
State mean	%	97.3	95.0	96.6	96.3	97.6	97.3	97.4	97.6

School against State

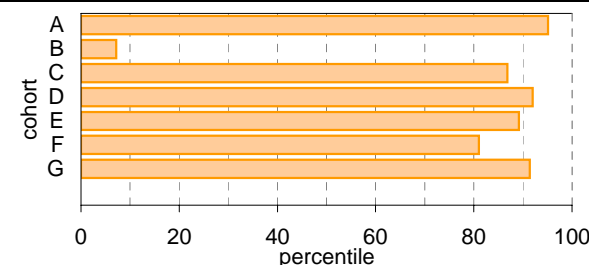
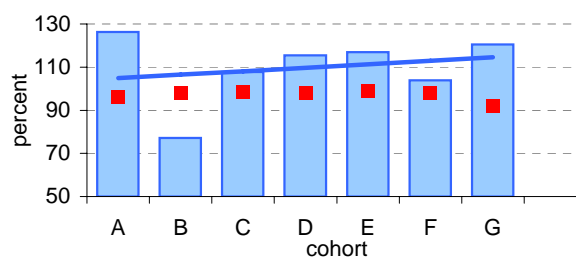


School as percentile



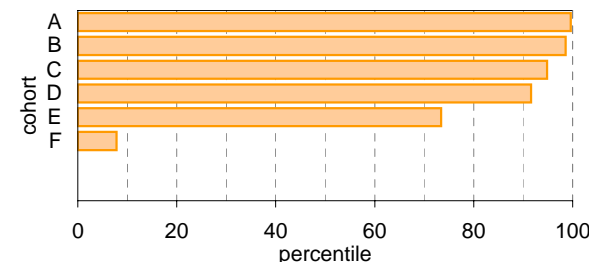
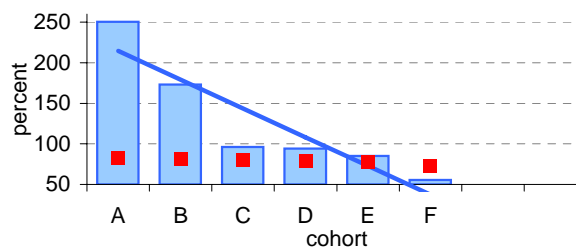
Year 10 (Aug) - 11 (Feb)

	Cohorts:	A	B	C	D	E	F	G
Year 10		2001	2002	2003	2004	2005	2006	2007
Year 11		2002	2003	2004	2005	2006	2007	2008
Year 10 (Aug)	no.	57	98	129	130	120	173	174.7
Year 11 (Feb)	no.	72	75.6	139	150	140.4	179.8	210.4
Year 10 (Aug) - 11 (Feb)	%	126.3	77.1	107.8	115.4	117.0	103.9	120.4
State mean	%	96.2	97.7	98.7	98.2	99.0	98.2	92.0



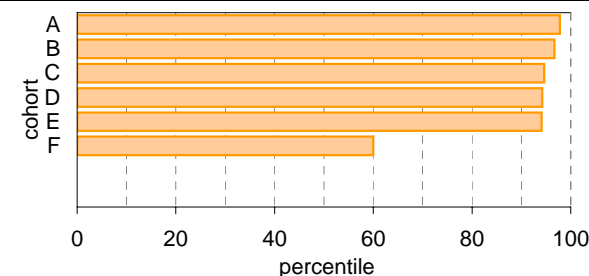
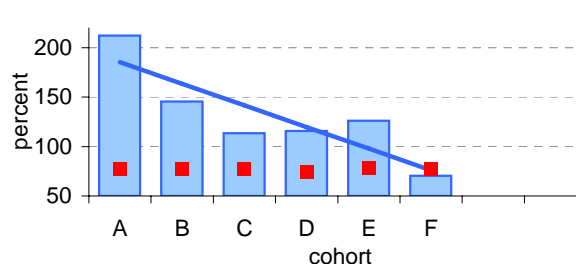
Year 11 (Feb) - 12 (Aug)

	Cohorts:	A	B	C	D	E	F
Year 11		2002	2003	2004	2005	2006	2007
Year 12		2003	2004	2005	2006	2007	2008
Year 11 (Feb)	no.	72	75.6	139	150	140.4	179.8
Year 12 (Aug)	no.	180.4	131	133.9	141.2	119.8	100
Year 11 (Feb) - 12 (Aug)	%	250.6	173.3	96.3	94.1	85.3	55.6
State mean	%	82.5	81.0	79.8	78.8	78.1	72.7



Year 7 (Feb) - 12 (Aug)

	Cohorts:	A	B	C	D	E	F
Year 7		1998	1999	2000	2001	2002	2003
Year 12		2003	2004	2005	2006	2007	2008
Year 7 (Feb)	no.	85	90	118	122	95	142
Year 12 (Aug)	no.	180.4	131	133.9	141.2	119.8	100
Year 7 (Feb) - 12 (Aug)	%	212.2	145.6	113.5	115.7	126.1	70.4
State mean	%	77.2	76.9	76.8	74.6	78.2	77.5



Legend: School (blue bar), State Mean (red square), School Trendline* (blue line), School as percentile (orange bar)

Real Student Retention

School no: 7635

School name: Box Hill High School

Explanation: Real retention rates show the percentage of students who have been enrolled at the same school over a period of time.

For example, the formula for the real retention rate for Year 7Feb to 10Aug for school X in 2008 is as follows:

$$\frac{\text{(no. of students enrolled in Yr10 in school X as at August 2008 census and who enrolled prior to 1/3/2005, ie, enrolled in school X at beginning of Yr7)}}{\text{(enrolments in Yr7 Feb in 2005 according to census)}}$$

By definition, real school retention will be less than or equal to 100% (assuming there are no students repeating the year, or accelerating through years). Generally, real school retention rates are affected by students transferring to another school & students exiting the school system. They are a measure of the 'holding power' of the school.

Source of data: Data retrieved electronically from CASES21 at time of rollover.

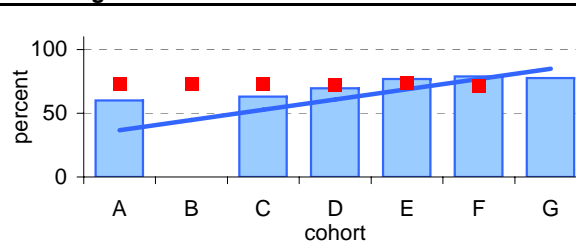
Notes: * The school trendline is only plotted when there is data for each calendar year.

^ 2008 benchmarks will be calculated in August, when data from all schools has been submitted.

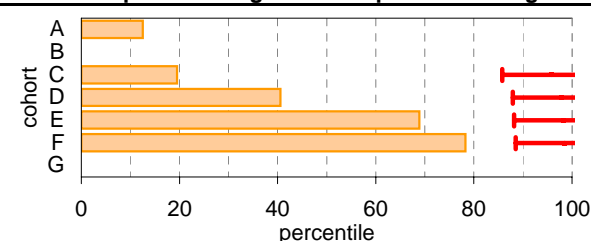
Year 7 (Feb) - 10 (Aug)

	Cohorts:	A	B	C	D	E	F	G
Year 7		1999	2000	2001	2002	2003	2004	2005
Year 10		2002	2003	2004	2005	2006	2007	2008
Year 7 (Feb)	no.	90	118	122	95	142	144	148
Year 10 (Aug)	no.	54	0	77	66	109	113.7	115
Year 7 (Feb) - 10 (Aug)	%	60.0	0.0	63.1	69.5	76.8	79.0	77.7
State mean^	%	72.5	72.7	72.8	71.7	73.5	71.5	

School against State^

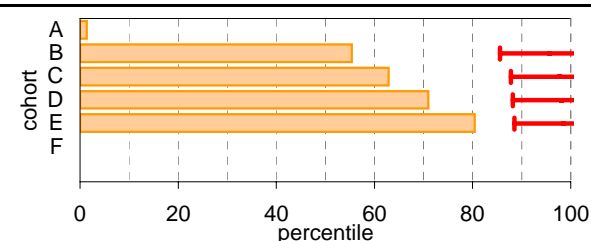
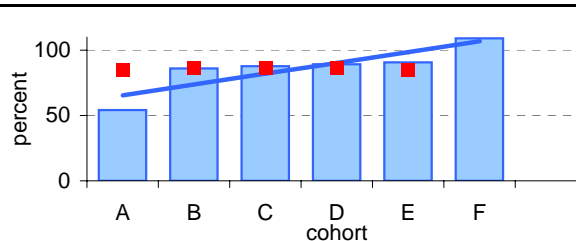


School as percentile against SFO percentile range^



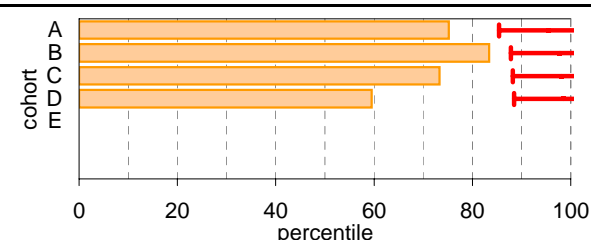
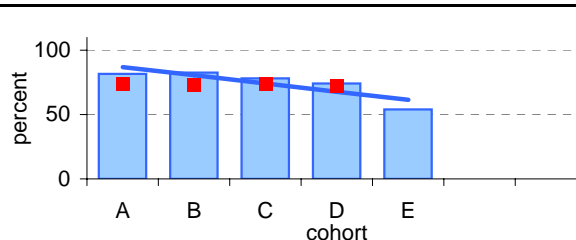
Year 10 (Aug) - 11 (Feb)

	Cohorts:	A	B	C	D	E	F
Year 10		2002	2003	2004	2005	2006	2007
Year 11		2003	2004	2005	2006	2007	2008
Year 10 (Aug)	no.	98	129	130	120	173	174.7
Year 11 (Feb)	no.	53	111	114	107	156.8	190.4
Year 10 (Aug) - 11 (Feb)	%	54.1	86.0	87.7	89.2	90.6	109.0
State mean^	%	84.9	85.9	85.9	86.1	85.1	



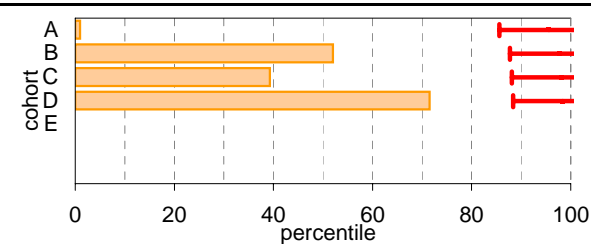
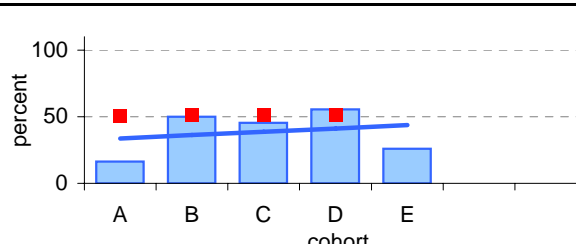
Year 11 (Feb) - 12 (Aug)

	Cohorts:	A	B	C	D	E
Year 11		2003	2004	2005	2006	2007
Year 12		2004	2005	2006	2007	2008
Year 11 (Feb)	no.	75.6	139	150	140.4	179.8
Year 12 (Aug)	no.	61.7	115	117.2	104.2	97
Year 11 (Feb) - 12 (Aug)	%	81.6	82.7	78.1	74.2	53.9
State mean^	%	73.9	73.0	73.5	72.5	



Year 7 (Feb) - 12 (Aug)

	Cohorts:	A	B	C	D	E
Year 7		1999	2000	2001	2002	2003
Year 12		2004	2005	2006	2007	2008
Year 7 (Feb)	no.	90	118	122	95	142
Year 12 (Aug)	no.	14.7	59	55.4	52.7	37
Year 7 (Feb) - 12 (Aug)	%	16.3	50.0	45.4	55.5	26.1
State mean^	%	50.6	51.0	51.1	50.8	



Legend: School (blue bar), State Mean (red square), School Trendline* (blue line)

Legend: School as percentile (orange bar), SFO Percentile range (red bracket)

Exit Destination: Year 10

School no: 7635

School name: Box Hill High School

Explanation: The destination of students who left during or at the end of Year 10.

Source of data: Data retrieved electronically from CASES21 following February census.

Exit Destination	2004		2005		2006		2007		2008		2007 state^
	n	%	n	%	n	%	n	%	n	%	%
Continuing education and training											
Government School	10	52.6	3	50.0	5	29.4	6	40.0	20	66.7	42.5
Non-Government School			1	16.7	2	11.8	4	26.7	4	13.3	6.0
University											0.1
Other Training Provider					1	5.9					3.3
TAFE / RTO / ACE											11.7
Apprenticeship / Traineeship							1	6.7			6.4
Home Schooling											0.4
Deferred											0.0
(ceased in 2007)											
School (non Victorian)			1	16.7	1	5.9					
TAFE	1	5.3			2	11.8					
Private Registered Training Organisation											
Adult and Community Education Organisation											
SUBTOTAL	11	57.9	5	83.3	11	64.7	11	73.3	24	80.0	70.5
Not continuing education and training											
Employed (part time)											1.7
Employed (full time)							1	6.7			6.5
Unemployed (seeking work)											4.8
Unemployed (not seeking work)†											1.3
SUBTOTAL							1	6.7			14.3
Unknown	8	42.1	1	16.7	6	35.3	3	20.0	6	20.0	15.2
TOTAL	19	100.0	6	100.0	17	100.0	15	100.0	30	100.0	100.0

Total Yr 10 February enrolment

115

105

152

159

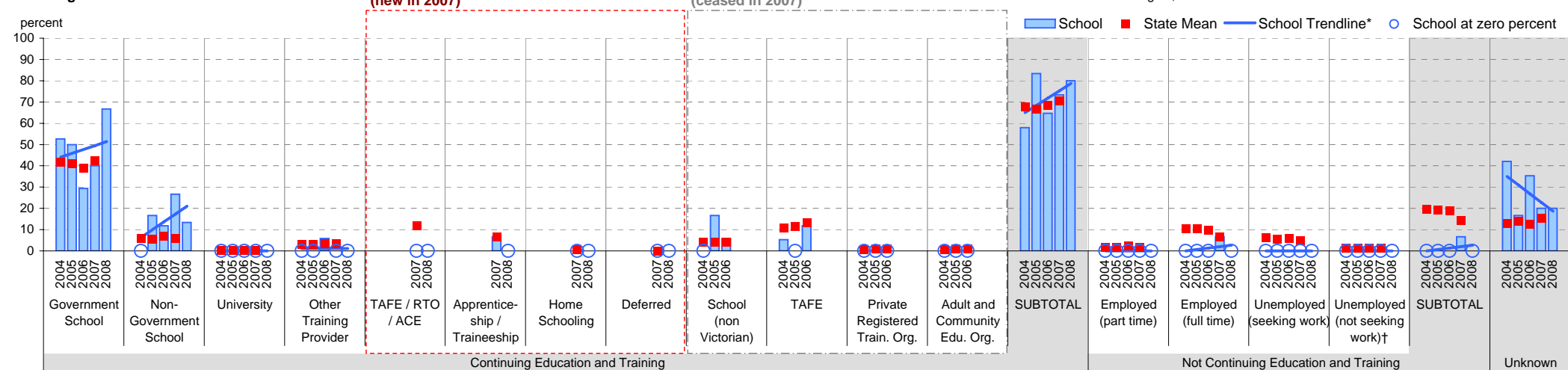
166

Notes: * The school trendline is being trialled. It is only plotted when there is data for each calendar year.

† Includes deceased students.

^ 2008 benchmarks will be calculated in August, when data from all schools has been submitted.

School against State



Exit Destination: Year 11

School no: 7635

School name: Box Hill High School

Explanation: The destination of students who left during or at the end of Year 11.

Source of data: Data retrieved electronically from CASES21 following February census.

Exit Destination	2004		2005		2006		2007		2008		2007 state [^]
	n	%	n	%	n	%	n	%	n	%	%
Continuing education and training											
Government School	8	23.5	6	40.0	12	27.9	7	33.3	11	45.8	18.6
Non-Government School	4	11.8			7	16.3	3	14.3	1	4.2	4.4
University					6	14.0			2	8.3	0.3
Other Training Provider	1	2.9			1	2.3					4.3
(new in 2007)											
TAFE / RTO / ACE							4	19.0	1	4.2	15.0
Apprenticeship / Traineeship							1	4.8	1	4.2	10.7
Home Schooling											0.4
Deferred											0.0
(ceased in 2007)											
School (non Victorian)	1	2.9	2	13.3							
TAFE	6	17.6			1	2.3					
Private Registered Training Organisation											
Adult and Community Education Organisation											
SUBTOTAL	20	58.8	8	53.3	27	62.8	15	71.4	16	66.7	53.9
Not continuing education and training											
Employed (part time)											4.1
Employed (full time)	1	2.9	3	20.0	3	7.0					13.7
Unemployed (seeking work)											9.1
Unemployed (not seeking work) [†]			2	13.3							1.8
SUBTOTAL	1	2.9	5	33.3	3	7.0					28.7
Unknown	13	38.2	2	13.3	13	30.2	6	28.6	8	33.3	17.4
TOTAL	34	100.0	15	100.0	43	100.0	21	100.0	24	100.0	100.0

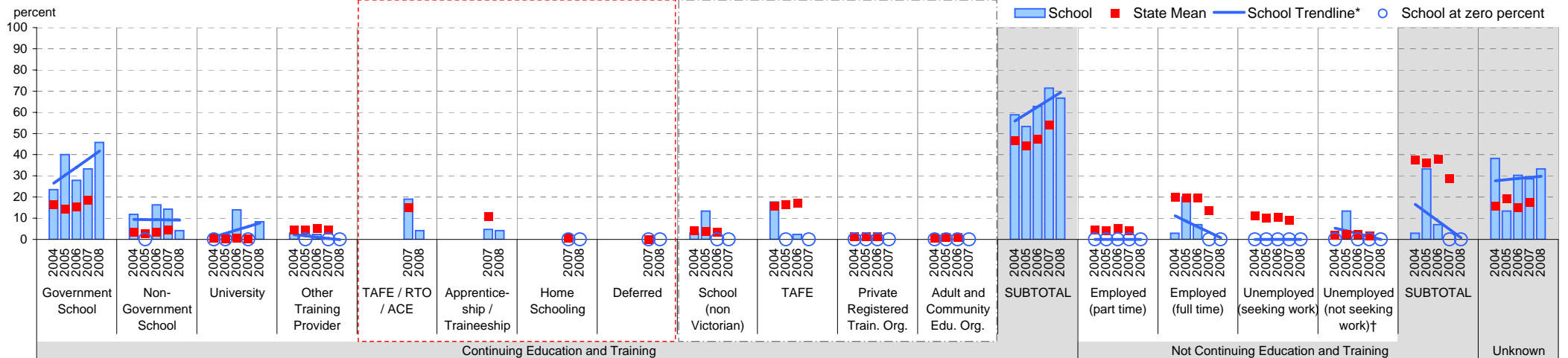
Total Yr 11 February enrolment

139 150 140 180 210 Notes: * The school trendline is being trialled. It is only plotted when there is data for each calendar year.

[†] Includes deceased students.

[^] 2008 benchmarks will be calculated in August, when data from all schools has been submitted.

School against State



Exit Destination: Students who left Year 12 before completing the year

School no: 7635

School name: Box Hill High School

Explanation: The destination of students who left prior to completing Year 12.

Source of data: Data retrieved electronically from CASES21 following February census.

Exit Destination	2004		2005		2006		2007		2008		2007 state^
	n	%	n	%	n	%	n	%	n	%	%
Continuing education and training											
Government School	1	10.0	2	66.7	7	33.3	1	14.3	3	16.7	10.2
Non-Government School					1	4.8	1	14.3	1	5.6	1.8
University	1	10.0			4	19.0			1	5.6	1.1
Other Training Provider							1	14.3	1	5.6	3.5
TAFE / RTO / ACE									3	16.7	14.7
Apprenticeship / Traineeship							1	14.3			7.5
Home Schooling											
Deferred											0.1
(ceased in 2007)											
School (non Victorian)					3	14.3					
TAFE	3	30.0									
Private Registered Training Organisation											
Adult and Community Education Organisation											
SUBTOTAL	5	50.0	2	66.7	15	71.4	4	57.1	9	50.0	39.0
Not continuing education and training											
Employed (part time)					1	4.8					6.0
Employed (full time)	1	10.0	1	33.3	1	4.8			1	5.6	21.6
Unemployed (seeking work)									1	5.6	12.8
Unemployed (not seeking work)†											2.9
SUBTOTAL	1	10.0	1	33.3	2	9.5			2	11.1	43.2
Unknown	4	40.0	3	100.0	4	19.0	3	42.9	7	38.9	17.8
TOTAL	10	100.0	3	100.0	21	100.0	7	100.0	18	100.0	100.0

Total Yr 12 February enrolment

134

135

144

122

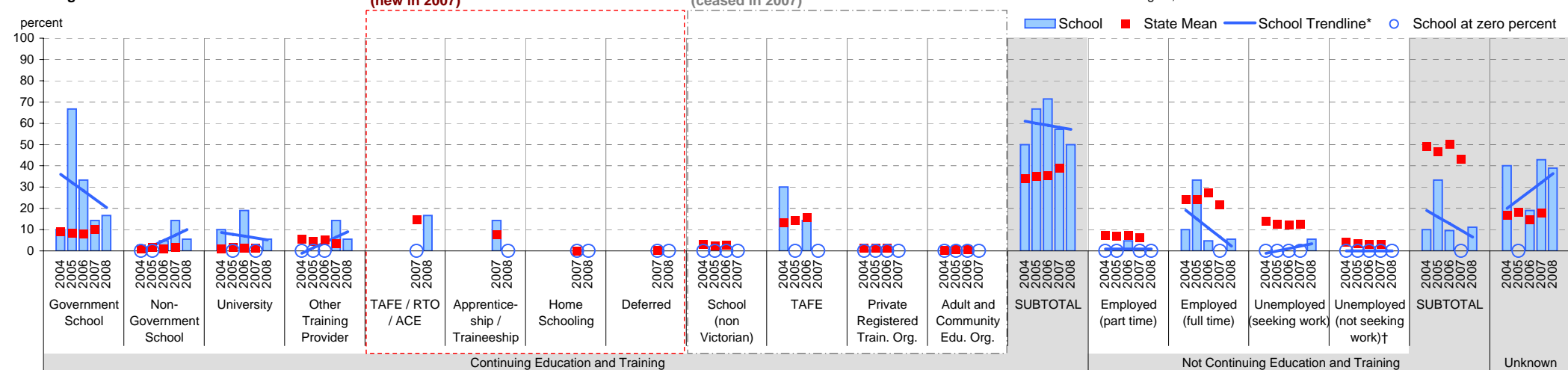
103

Notes: * The school trendline is being trialled. It is only plotted when there is data for each calendar year.

† Includes deceased students.

^ 2008 benchmarks will be calculated in August, when data from all schools has been submitted.

School against State



Exit Destination: Students who left at the end of Year 12

School no: 7635

School name: Box Hill High School

Explanation: The destination of students who left at the end of Year 12.

Source of data: Data retrieved electronically from CASES21 following February census.

Exit Destination	2004		2005		2006		2007		2008		2007 state^
	n	%	n	%	n	%	n	%	n	%	%
Continuing education and training											
Government School	2	1.4					3	2.6	2	1.2	1.2
Non-Government School											0.3
University	93	67.4	86	69.4	66	49.6	79	68.7	102	63.4	36.6
Other Training Provider							2	1.7	10	6.2	2.7
(new in 2007) TAFE / RTO / ACE							11	9.6	11	6.8	22.7
Apprenticeship / Traineeship									1	0.6	5.6
Home Schooling											0.0
Deferred									9	5.6	4.1
(ceased in 2007) School (non Victorian)											
TAFE	9	6.5	13	10.5	13	9.8					
Private Registered Training Organisation	5	3.6	7	5.6							
Adult and Community Education Organisation											
SUBTOTAL	109	79.0	106	85.5	79	59.4	95	82.6	135	83.9	73.2
Not continuing education and training											
Employed (part time)	1	0.7	2	1.6	3	2.3					5.5
Employed (full time)	2	1.4	4	3.2	7	5.3	4	3.5			10.5
Unemployed (seeking work)					3	2.3					4.4
Unemployed (not seeking work)†	1	0.7									0.7
SUBTOTAL	4	2.9	6	4.8	13	9.8	4	3.5			21.1
Unknown	25	18.1	12	9.7	41	30.8	16	13.9	26	16.1	5.7
TOTAL	138	100.0	124	100.0	133	100.0	115	100.0	161	100.0	100.0

Total Yr 12 February enrolment

134

135

144

122

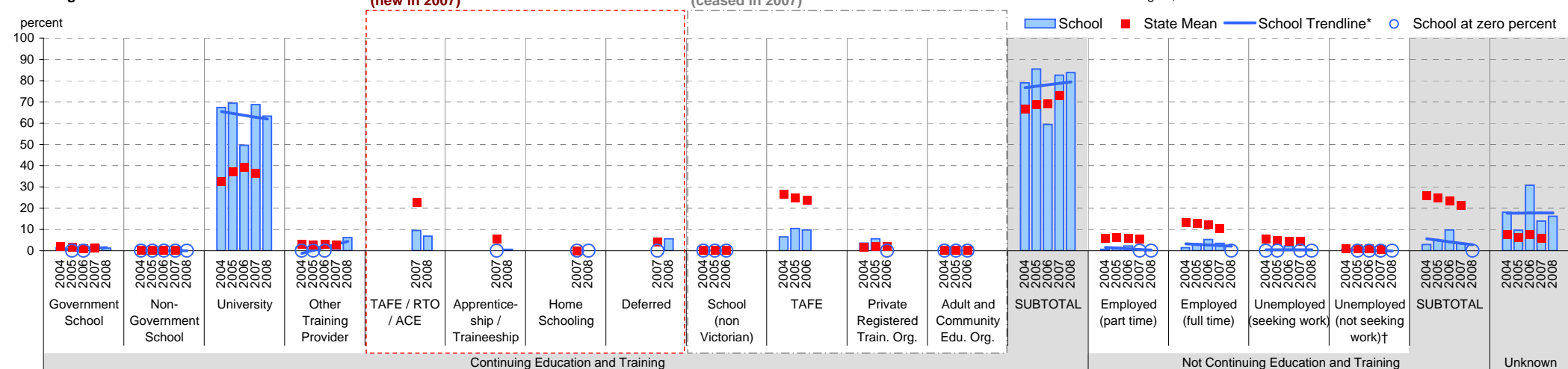
103

Notes: * The school trendline is being trialled. It is only plotted when there is data for each calendar year.

† Includes deceased students.

^ 2008 benchmarks will be calculated in August, when data from all schools has been submitted.

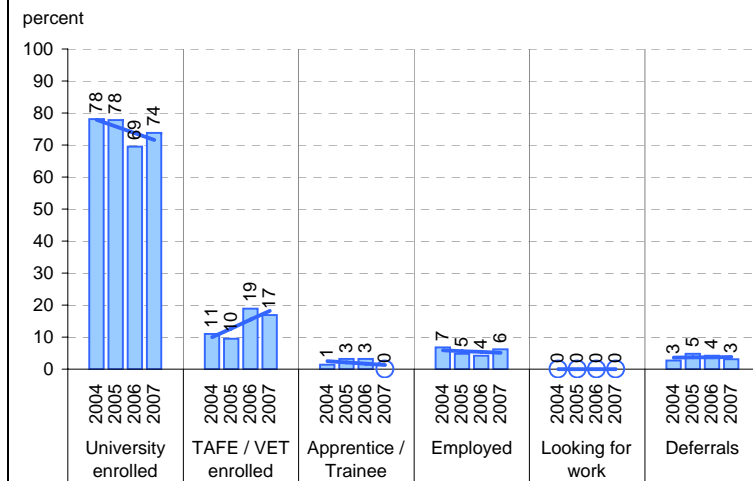
School against State



On Track

Source of data: Data received from a telephone survey of Year 12 completers, conducted in April / May of the subsequent year.

School only



Note: The exit destination data from On Track and CASES21 is not directly comparable for several reasons, one of which is the different bases. CASES21 data is based on all Year 12 completers, whereas On Track is based on Year 12 completers who responded to the survey. Hence the CASES21 data has an "unknown" category and the On Track data does not. Another reason is the slightly different categories for example, CASES21 includes a "home schooling" category.

Student Absence

School no: 7635

School name: Box Hill High School

Source of data: Data retrieved electronically from CASES21.

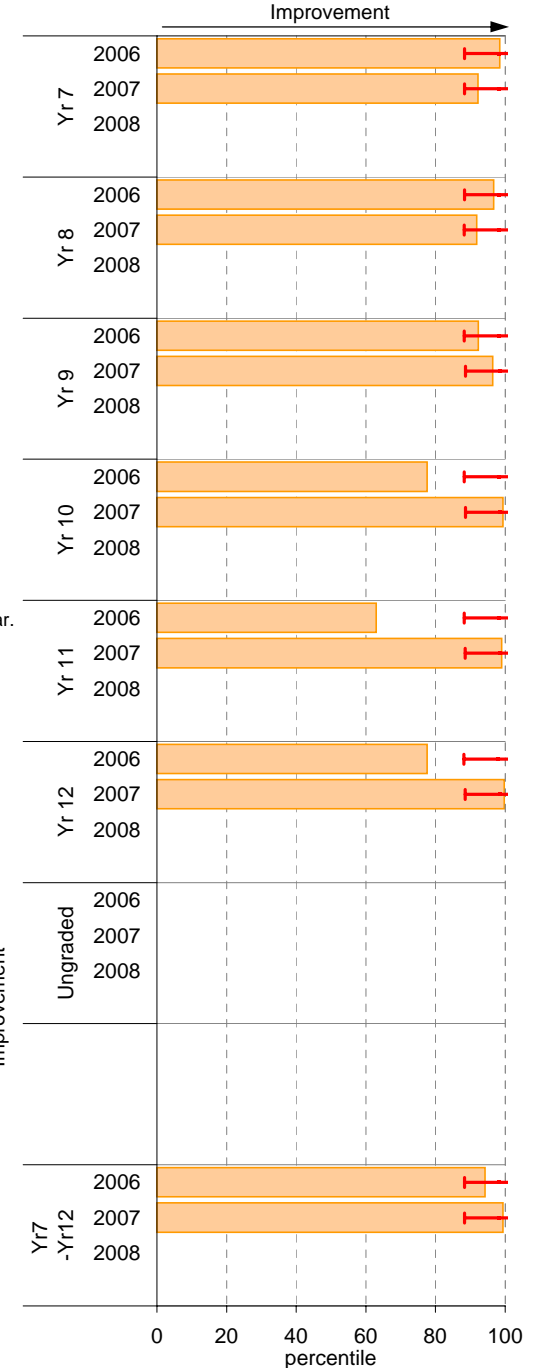
Explanation: The average (mean) number of absent days† per FTE** student.

Note that 20 absent days equates to 1 absent day per fortnight, and 10 absent days to 1 absent day per month.

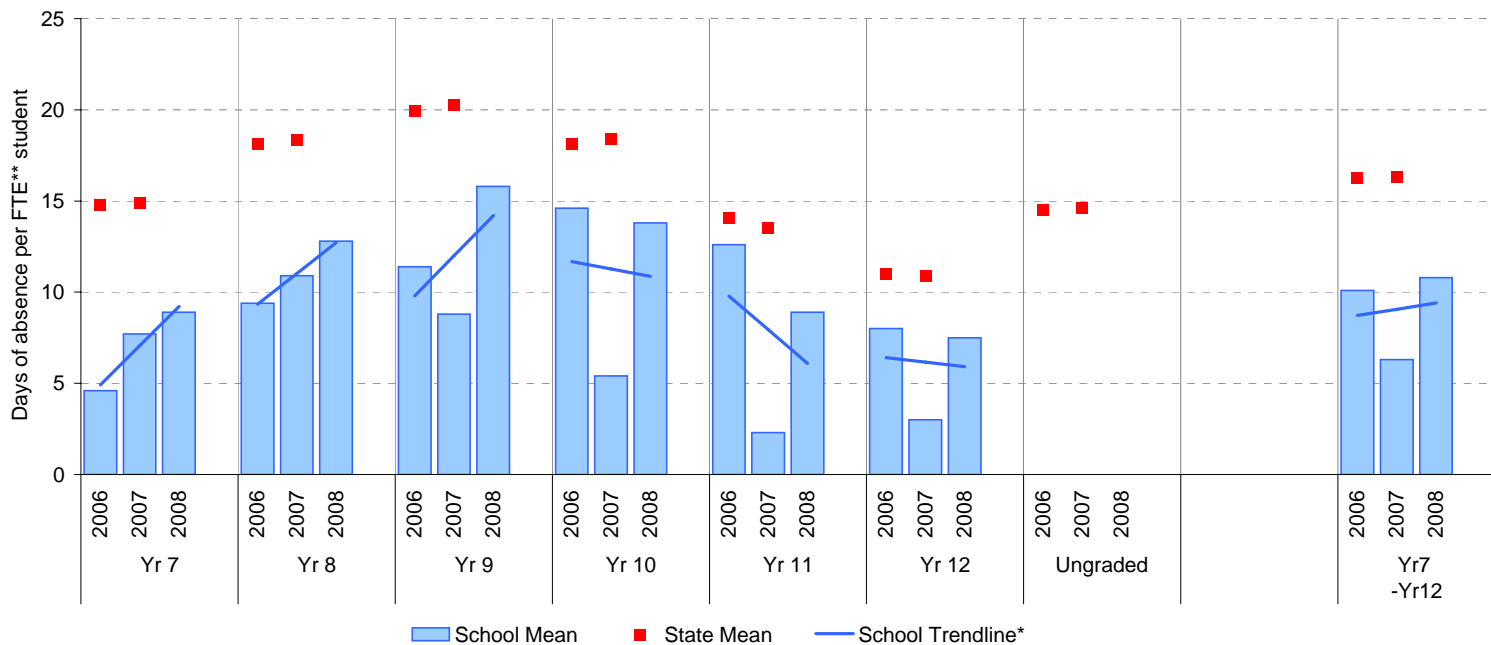
	School						2007 state benchmark^		
	2006		2007		2008		25th ptile	Mean	75th ptile
	Enrolments	Avg absent days / FTE** student	Enrolments	Avg absent days / FTE** student	Enrolments	Avg absent days / FTE** student			
Yr 7	144.0	4.6	151.0	7.7	151.8	8.9	12.6	14.9	18.6
Yr 8	156.0	9.4	147.6	10.9	149.9	12.8	15.1	18.3	22.2
Yr 9	147.0	11.4	159.5	8.8	146.9	15.8	15.9	20.2	24.8
Yr 10	152.0	14.6	169.4	5.4	98.3	13.8	15.2	18.4	22.8
Yr 11	140.4	12.6	178.7	2.3	169.4	8.9	10.9	13.5	18.5
Yr 12	143.9	8	120.1	3	221.4	7.5	8.3	10.9	14.8
Ungraded								14.6	
7-12 mean		10.1		6.3		10.8		16.3	

Notes: † Includes non-curriculum absences only (absence codes 200, 201, 202, 203, 205, 206, 207, 208, 209, 210, 211, 300, 401, 500, 700, 800, 804, 805, 900).
 * The school trendline is only plotted when there is data for each calendar year.
 ** FTE = Full Time Equivalent (including part-time and part-year fractions).
 ^ 2008 benchmarks and percentiles will be calculated in August, when data from all schools has been submitted.

School Mean as percentile against SFO percentile range^



School Mean against State Mean^



Parent Opinion

School no: 7635

School name: Box Hill High School

Explanation: A self-completion questionnaire to obtain parents' opinions of the school. Parents rated a number of statements using a scale where 1=strongly disagree & 7=strongly agree. The statements were grouped into the following categories.

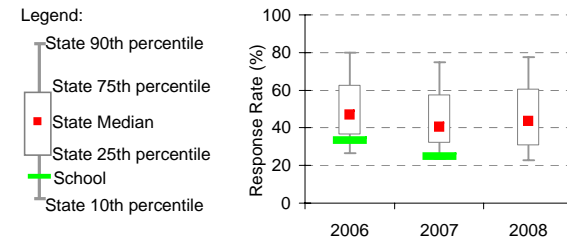
Source of data: Data scanned from questionnaires completed by parents.

Variable No.	Name	Year	School mean	State Secondary median
1	School Improvement	2006	5.50	5.13
		2007	5.31	5.11
		2008	5.67	5.07
2	Approachability	2006	5.37	5.11
		2007	5.01	5.10
		2008	5.41	5.12
3	Teacher Morale	2006	5.32	4.92
		2007	5.36	4.88
		2008	5.59	4.89
4	Parent Input	2006	5.12	4.89
		2007	4.97	4.83
		2008	5.26	4.84
5	Stimulating Learning	2006	5.21	4.81
		2007	5.18	4.79
		2008	5.38	4.82
6	Behaviour Management	2006	5.11	4.76
		2007	5.02	4.76
		2008	5.40	4.71
7	Reporting	2006	5.37	5.28
		2007	5.11	5.11
		2008	5.45	5.17

Variable No.	Name	Year	School mean	State Secondary median
8	Learning Focus	2006	5.78	5.27
		2007	5.33	5.24
		2008	5.71	5.22
9	Transitions	2006	5.43	5.24
		2007	5.36	5.23
		2008	5.51	5.24
10	Extra Curricula	2006	5.04	4.67
		2007	4.73	4.67
		2008	4.72	4.65
11	Homework	2006	4.88	4.57
		2007	4.73	4.51
		2008	4.95	4.57
12	General Satisfaction	2006	6.03	5.33
		2007	5.27	5.31
		2008	5.74	5.32
13	Student Safety^	2006	6.26	5.37
		2007	5.91	5.42
		2008	5.49	5.44
14	Classroom Behaviour^	2006	4.51	3.56
		2007	4.35	3.47
		2008	4.13	3.48

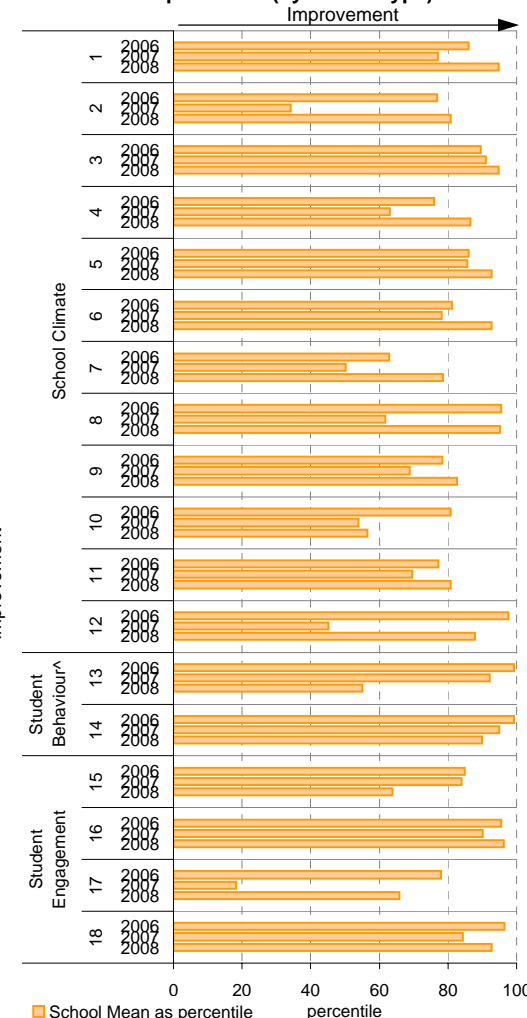
Variable No.	Name	Year	School mean	State Secondary median
15	Connectedness to Peers	2006	5.90	5.71
		2007	5.90	5.68
		2008	5.75	5.67
16	Student Motivation	2006	5.55	4.87
		2007	5.31	4.81
		2008	5.57	4.78
17	Social Skills	2006	5.61	5.42
		2007	5.18	5.41
		2008	5.51	5.40
18	School Connectedness	2006	5.59	4.99
		2007	5.26	4.95
		2008	5.47	4.94

School response rate** against Secondary school distribution

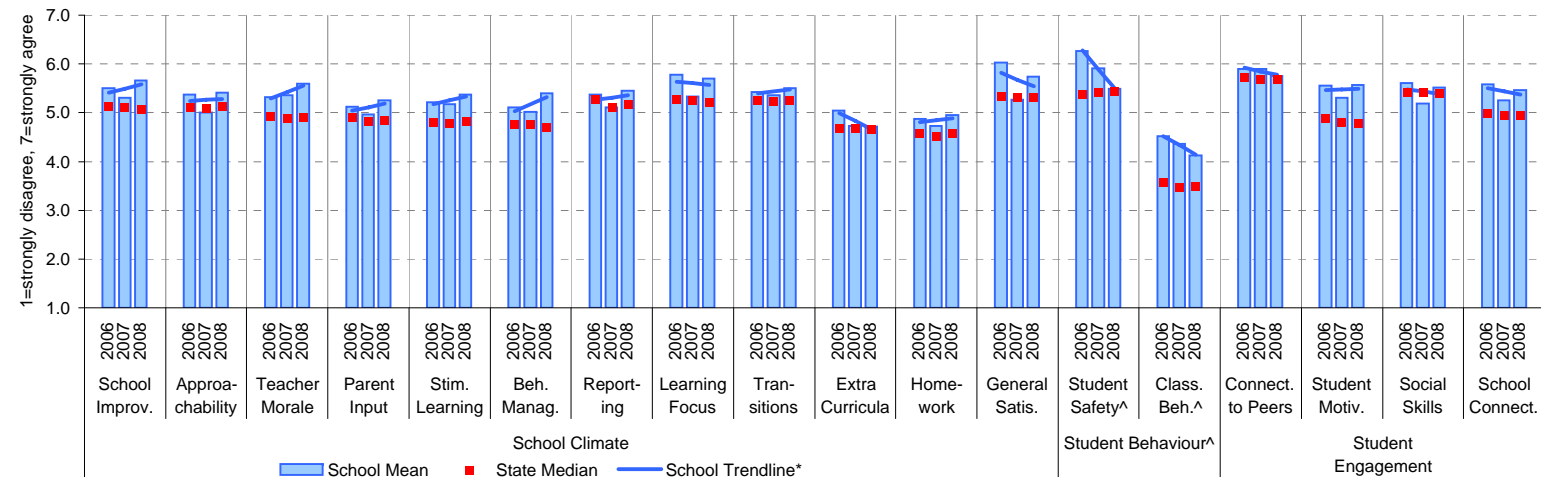


Year	No. of respondents	No. invited	Response Rate
2006	40	120	33.3%
2007	31	124	25%
2008	39		N/A

School Mean as percentile (by school type)



School Mean against Secondary State Mean



Notes: * The school trendline is plotted when there is data for each calendar year.

^^ Benchmarks available for Primary, Secondary, Pri/Sec, Special and SDS schools.

** If there were 6 or less respondents, table data is not shown for confidentiality reasons. If there were 3 or less respondents, graph data is not shown for confidentiality reasons.

^ Parents' responses to all negatively phrased questions have been reversed for reporting purposes. Across all variables, the higher the score or percentile rank, the more positive parents' perceptions.

Produced by Data, Outcomes and Evaluation Division, DEECD

Staff Opinion

School no: 7635

School name: Box Hill High School

Explanation: A self-completion questionnaire to obtain the staff's opinions of the school. The survey was administered online using the School Organisational Health Questionnaire.

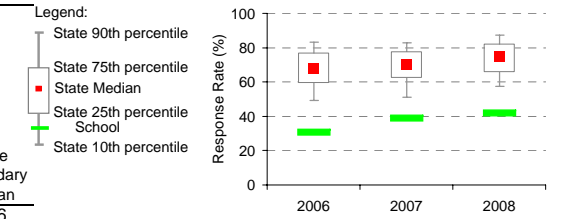
Source of data: Data transmitted from school staff to DEECD via an online survey application.

Variable No.	Name	Year	School mean	State Secondary median
1	Individual Morale	2006	67.5	64.2
		2007	71.9	63.5
		2008	75.3	65.0
2	School Morale	2006	69.8	60.8
		2007	72.7	60.2
		2008	74.7	62.2
3	Supportive Leadership	2006	72.2	65.0
		2007	77.5	63.8
		2008	80.7	65.8
4	Role Clarity	2006	77.2	68.0
		2007	78.1	67.8
		2008	78.2	69.1
5	Professional Interaction	2006	71.8	68.1
		2007	76.5	68.3
		2008	77.6	70.4
6	Participative Decision-Making	2006	63.7	59.0
		2007	68.6	58.7
		2008	74.0	59.8
7	Goal Congruence	2006	69.4	64.7
		2007	72.1	65.3
		2008	75.6	66.4

Variable No.	Name	Year	School mean	State Secondary median
8	Appraisal & Recognition	2006	54.4	55.6
		2007	58.5	55.4
		2008	69.6	57.9
9	Professional Growth	2006	62.0	61.2
		2007	65.4	61.6
		2008	73.4	62.7
10	Curriculum Coordination	2006	60.6	57.8
		2007	62.2	57.5
		2008	68.6	58.4
11	Effective Discipline Policy	2006	71.2	58.5
		2007	70.0	59.2
		2008	69.5	59.5
12	Student Orientation	2006	77.5	70.5
		2007	82.5	70.0
		2008	84.8	70.8
13	Student Motivation	2006	80.4	48.9
		2007	79.8	48.1
		2008	80.3	49.0
14	Student Decision-Making	2006	67.2	57.2
		2007	65.5	56.2
		2008	66.2	57.8

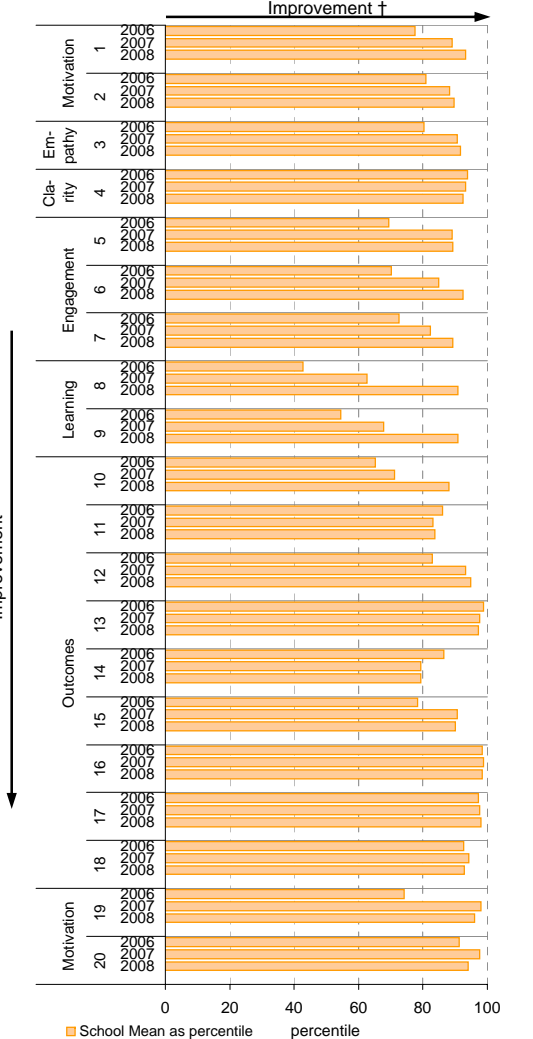
Variable No.	Name	Year	School mean	State Secondary median
15	Learning Environment	2006	69.0	62.6
		2007	74.8	62.3
		2008	76.1	63.8
16	Student Misbehaviour	2006	16.3	49.3
		2007	16.2	49.9
		2008	18.4	49.6
17	Classroom Misbehaviour	2006	10.7	20.9
		2007	10.0	22.4
		2008	9.6	21.4
18	Excessive Work Demands	2006	45.1	60.4
		2007	43.4	61.4
		2008	45.5	59.4
19	Individual Distress	2006	28.4	32.6
		2007	18.9	33.2
		2008	20.6	31.7
20	School Distress	2006	33.0	47.1
		2007	25.3	48.6
		2008	29.3	46.2

School response rate** against Secondary school distribution

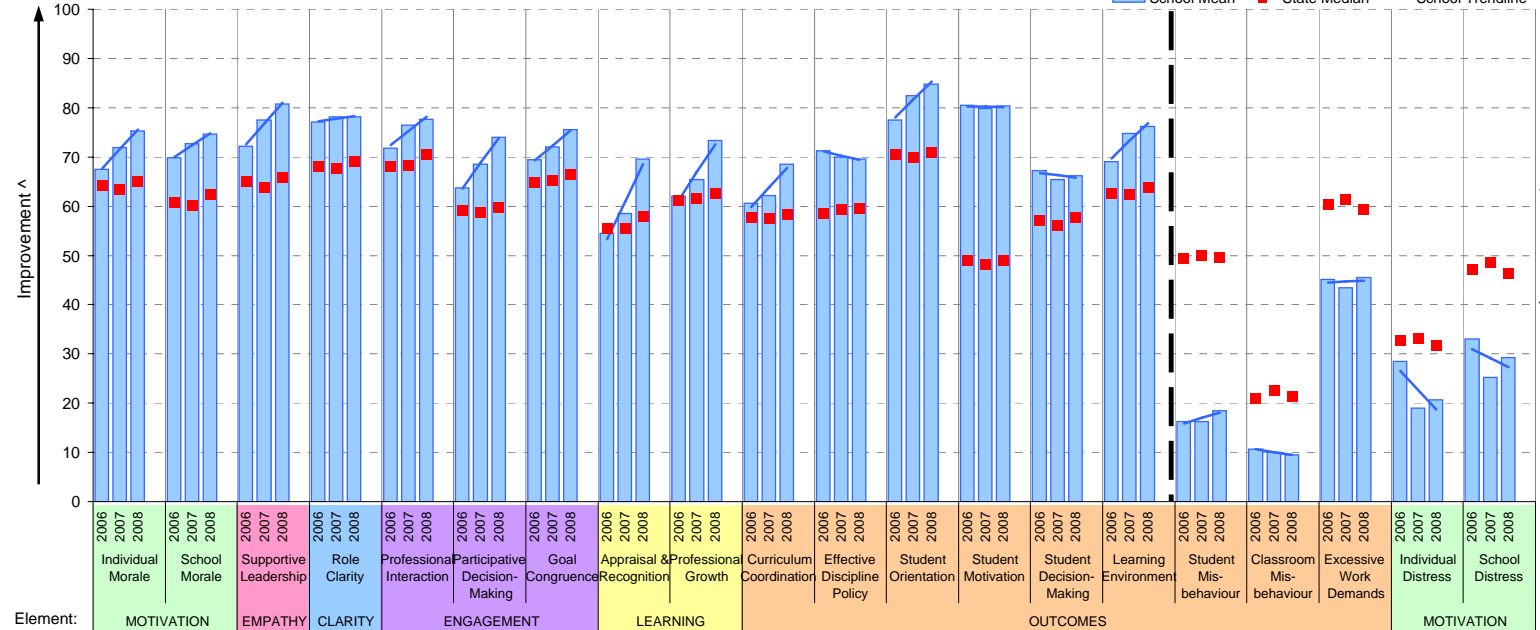


Year	No. of respondents	No. invited	Response Rate
2006	32	105	30%
2007	40	103	39%
2008	43	103	42%

School Mean as percentile (by school type)



School Mean against Secondary State Median



Notes: * The school trendline is being trialled. It is only plotted when there is data for each calendar year.

** If there were 6 or less respondents, table data is not shown for confidentiality reasons. If there were 3 or less respondents, graph data is not shown for confidentiality reasons.

^ The higher the school mean, the more positive the outcome for variables 1 to 15. The lower the school mean, the more positive the outcome for variables 16 to 20.

† The higher the school percentile, the more positive the outcome for all variables.

^^ Benchmarks are available for Primary, Secondary, Pri/Sec, Special & SDS schools.

Performance & Development Culture (P&DC)^{††}

NEW

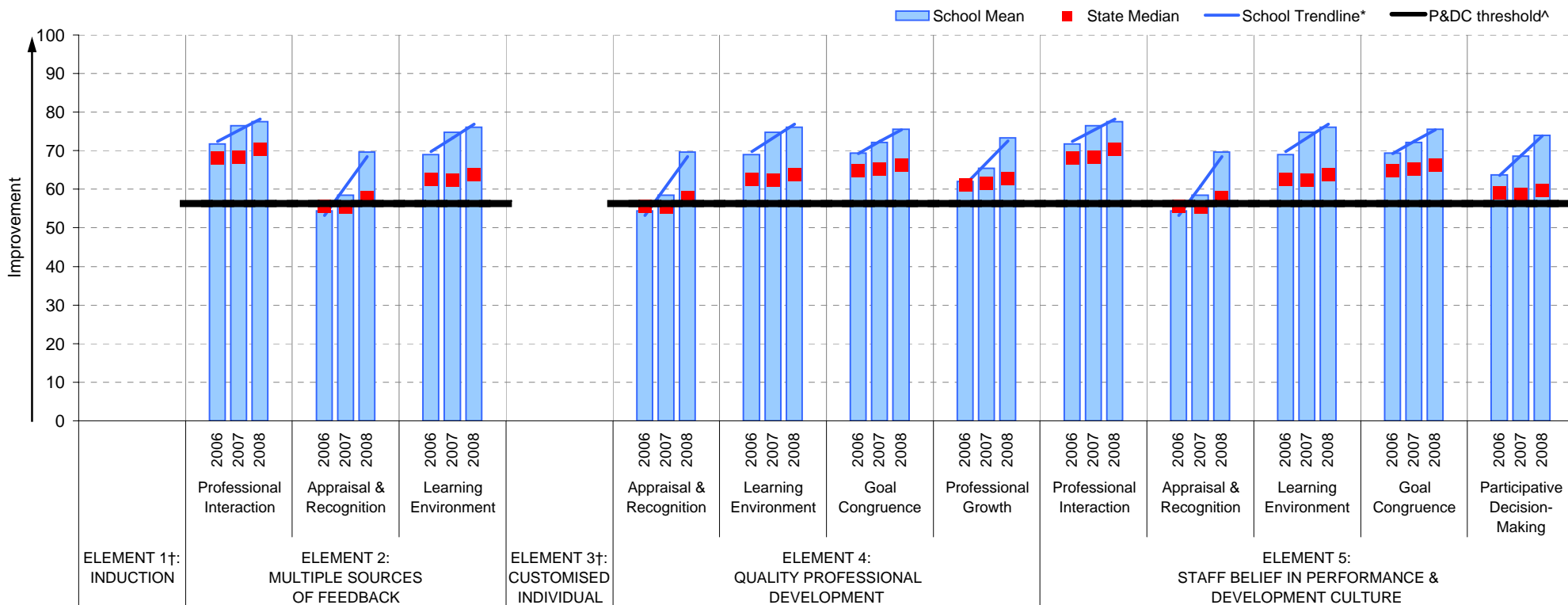
School no: 7635

School name: Box Hill High School

Explanation: The data on this page refers to the Staff Opinion Survey.

Source of data: Data transmitted from school staff to DEECD via an online survey application.

School Mean against Secondary State Median



Notes:

†† An assessment of the correlation between the P&DC Questionnaire and the Staff Opinion Survey was undertaken using data from Victorian Government schools that completed both surveys 2005 to 2007 (ie. 699 schools). This led to the identification of the components of the Staff Opinion Survey that could be used to assist schools with the ongoing monitoring of their performance and development culture. Refer to the P&DC website for further information: <http://www.education.vic.gov.au/management/schoolimprovement/panddc/default.htm>. For numerical r relating to the above graph, refer to the Staff Opinion Survey page in this report

† Note that there is no significant correlation between the Staff Opinion Survey and P&DC elements 1 (Induction) and 3 (Customised Individual Development Plan)

^ The P&DC threshold was derived from the P&DC Questionnaire 'percent favourable' methodology where a school is considered at the standard of accreditation when their Element score is : favourable (ie. at least 75% of staff selected the top two response categories in the P&DC Questionnaire)

* The school trendline is only plotted when there is data for each calendar year.

** If there were 3 or less respondents, graph data is not shown for confidentiality reasons

^^ Benchmarks are available for Primary, Secondary, Pri/Sec, Special & SDS schools

Staff Sick Leave

School no: 7635

School name: Box Hill High School

Explanation: The number of non-certificated and total sick leave days taken per staff member. A detailed explanation on how staff sick leave is calculated is provided at: education.vic.gov.au/management/schoolimprovement/performance/performancefaq.htm.

Source of data: Human Resources Management System (HRMS)^.

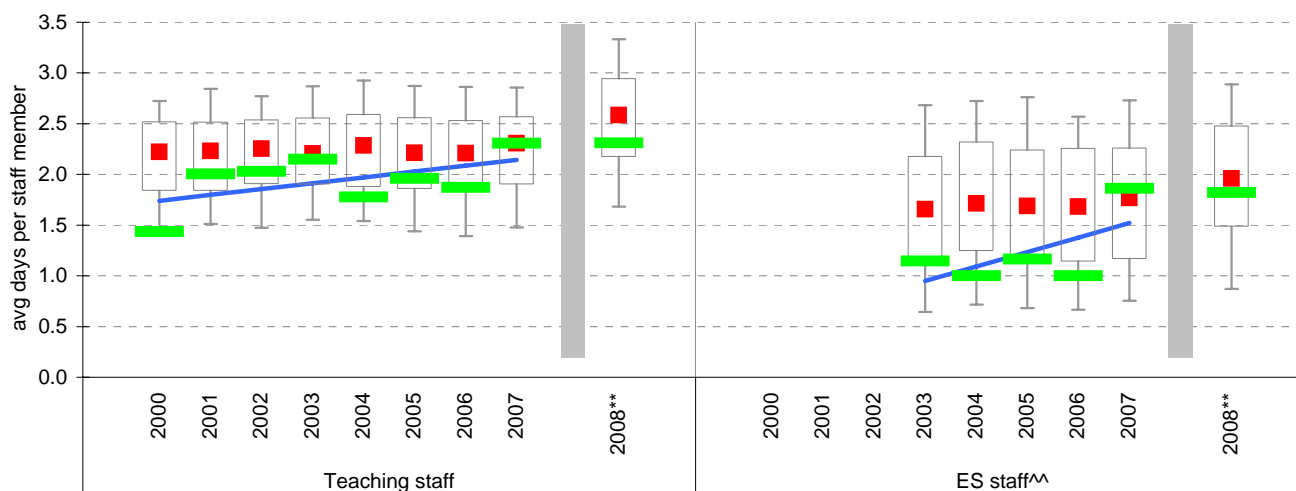
Non-Certificated sick leave days per staff member^

Staff Type	2000	2001	2002	2003	2004	2005	2006	2007	2008**	2008 State Median**
Teacher	1.44	2.00	2.03	2.15	1.78	1.96	1.87	2.31	2.31	2.59
ES^^					1.00	1.16	1.00	1.86	1.82	1.96

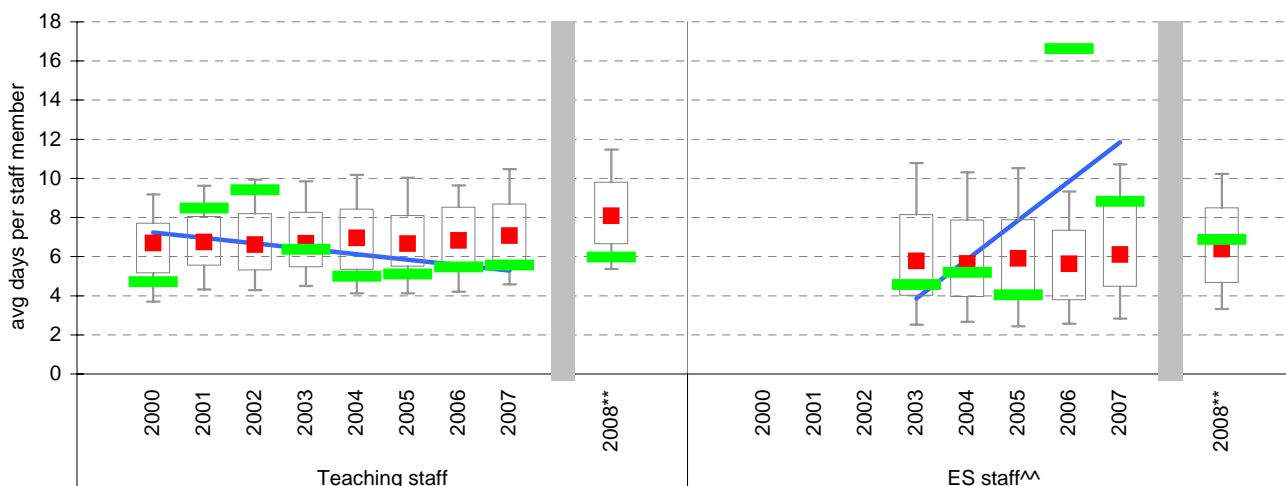
Total sick leave days per staff member^

Staff Type	2000	2001	2002	2003	2004	2005	2006	2007	2008**	2008 State Median**
Teacher	4.71	8.48	9.42	6.36	4.99	5.11	5.46	5.57	5.96	8.09
ES^^					5.19	4.04	16.63	8.83	6.87	6.38

NON-CERTIFICATED sick leave

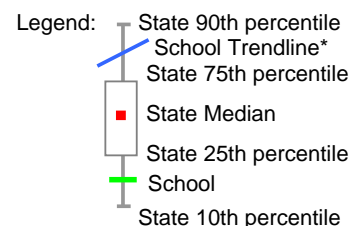


TOTAL sick leave



Notes:

- * The school trendline is only plotted when there is data for each calendar year.
- ** The way in which sick leave data are calculated changed in 2008. As such, data from 2008 cannot be compared with previous years.
- ^ There may be some discrepancy between the results from CASES21 and those from HRMS. The latter are considered to be more accurate.
- ^^ Data for ES (Education Support) staff is only available from 2003. In previous versions of this report, ES staff were known as SSO staff.



Teaching Staff Retention

School no: 7635

School name: Box Hill High School

Explanation: The retention rate of teaching staff is determined by matching staff payroll records for the last pay in June of one year (Year A), to the last pay in June of the following year (Year B).

Source of data: Human Resources Management System (HRMS).

Teaching Staff*

Year A	Year B	Number of Teaching Staff in Year A	Number of Teaching Staff retained in Year B	Teaching Staff Retention Rate	Statewide Average
2005	2006	80	75	94%	87%
2006	2007	86	74	86%	86%
2007	2008	82	72	88%	84%

Of the 80 teaching service staff at June 2005 (including those on leave without pay), 75 or 94% were still at the school at June 2006. This figure across all Government schools was 87%.

Of the 86 teaching service staff at June 2006 (including those on leave without pay), 74 or 86% were still at the school at June 2007. This figure across all Government schools was 86%.

Of the 82 teaching service staff at June 2007 (including those on leave without pay), 72 or 88% were still at the school at June 2008. This figure across all Government schools was 84%.

Ongoing Teaching Staff**

Year A	Year B	Number of Ongoing Teaching Staff in Year A	Number of Ongoing Teaching Staff retained in Year B	Ongoing Teaching Staff Retention Rate	Statewide Average
2005	2006	71	68	96%	91%
2006	2007	82	72	88%	90%
2007	2008	74	68	92%	88%

Of the 71 ongoing teaching service staff at June 2005 (including those on leave without pay), 68 or 96% were still at the school at June 2006. This figure across all Government schools was 91%.

Of the 82 ongoing teaching service staff at June 2006 (including those on leave without pay), 72 or 88% were still at the school at June 2007. This figure across all Government schools was 90%.

Of the 74 ongoing teaching service staff at June 2007 (including those on leave without pay), 68 or 92% were still at the school at June 2008. This figure across all Government schools was 88%.

Notes: * Teaching staff includes Principal class, Teacher class and Instructor class. Teaching staff employed as visiting teachers, guidance officers, curriculum consultants, etc. are excluded as they are not charged to a particular school.

^ Not including fixed term staff, except for where staff had changed from ongoing in Year A to fixed term in Year B.

Bank Balances

School no: 7635

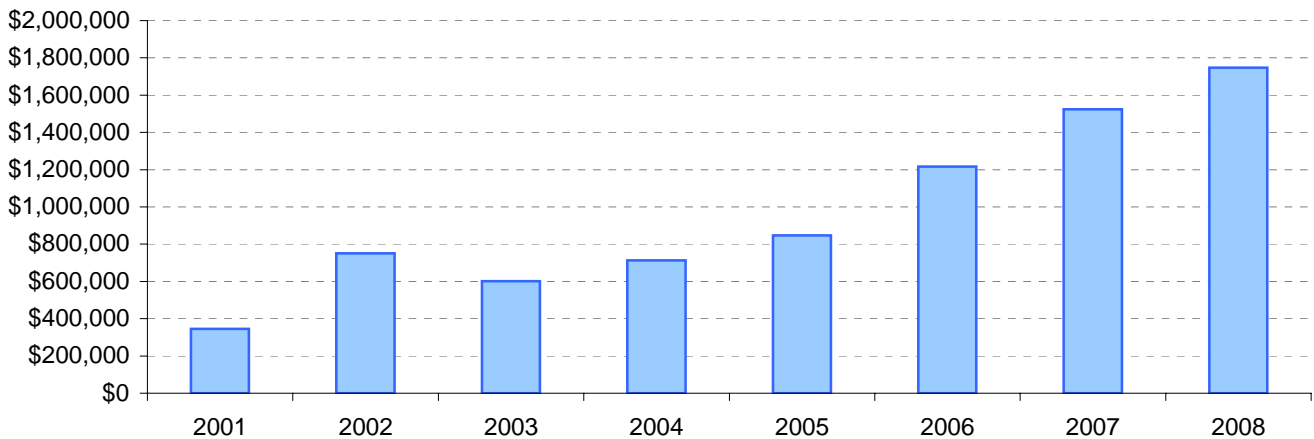
School name: Box Hill High School

Explanation: Account balance figures include official and investment accounts, and are calculated by taking the opening balance at 1st January plus the total receipts at 31st December less total payments at 31st December.

Account Balances (Official plus Investment Accounts)

2001	\$344,570	2005	\$846,974
2002	\$750,161	2006	\$1,216,070
2003	\$602,071	2007	\$1,523,288
2004	\$713,796	2008	\$1,746,708

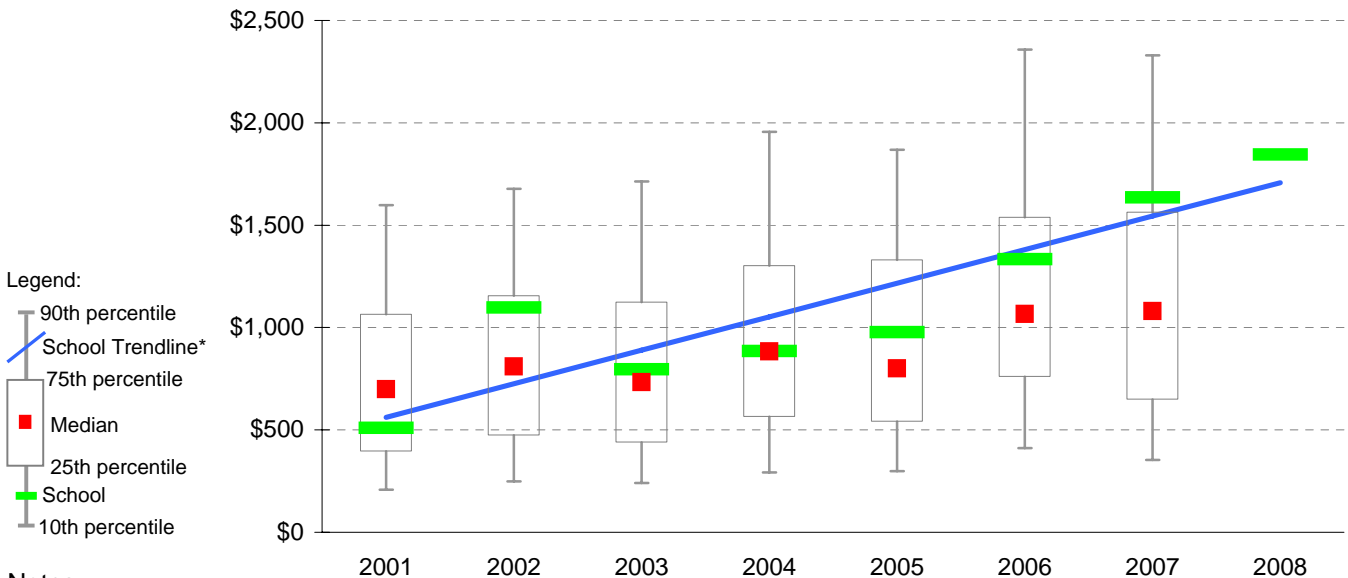
Account Balances



Account Balances (Official plus Investment Accounts) per student[†]

2001	\$509	2005	\$977
2002	\$1,098	2006	\$1,333
2003	\$795	2007	\$1,636
2004	\$885	2008	\$1,846

School account balances per student enrolled in August census plotted on state Secondary benchmarks[^]



Notes:

* The school trendline is being trialled. It is only plotted when there is data for each calendar year.

† The account balance per student has been calculated to enable some comparison to be made between schools.

^ Benchmarks for primary, secondary, pri/sec, SDS, special and language schools.